



Belize Sustainable Ocean Plan

Welcome to



Belize Sustainable Ocean Plan

# Belize Sustainable Ocean Plan

## Geospatial Workshop

---

Utilizing SeaSketch and Marxan

Date: April 14 – April 16, 2025

Location: Toucan Room, Belize Biltmore Plaza, Belize City, Belize

This is brought to you by



in partnership with





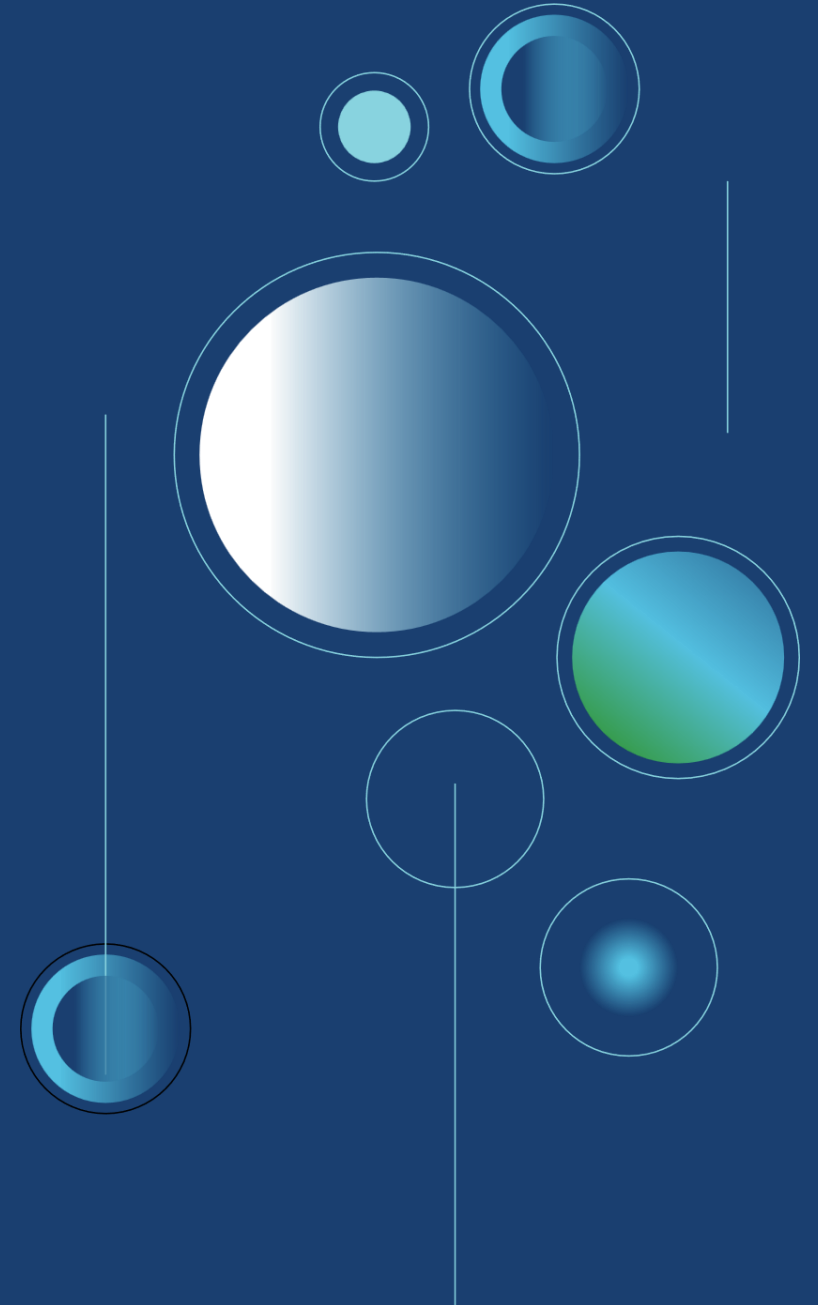
Belize Sustainable Ocean Plan

# Day 1: SeaSketch

---

Belize Sustainable Ocean Plan  
Geospatial Workshop

Date: April 14, 2025





# M.D.C.L. LTD FACILITATION TEAM



Diana  
Carillo

*Project Manager and  
Co-Facilitator*



Consuelo  
Godfrey

*Lead  
Facilitator*



Ronalee  
Mckenzie

*Technical  
Lead*

# GEOSPATIAL BINGO

## Instructions:

- Find people who match the descriptions on your bingo card
- Write the person's name in the box
- **First 2-3 people** to complete a row call out "**OCEAN!**" to win a prize
- Kindly be prepared to share one interesting thing you learned while filling. in your card



# Workshop Overview

Over the next **three days**, we will:

- Learn how SeaSketch and Marxan **support** marine spatial planning (MSP)
- **Practice** using SeaSketch to explore stakeholder-driven zoning
- **Identify inputs** needed for Marxan scenario modeling



# AGENDA AT A GLANCE

## **DAY 1: Capacity Building – SeaSketch**

**MAIN OBJECTIVE:** Build capacity  
with SeaSketch planning tools

- Review Ocean Use Survey results and feedback mechanisms
- Gain hands-on experience creating, editing, and analyzing zones
- Practice collaborative planning through forums and collections

# **AGENDA AT A GLANCE**

## **DAY 2: Bridging SeaSketch and Marxan**

**MAIN OBJECTIVE:** Practice facilitation and understand Marxan inputs

- Simulate stakeholder conversations using SeaSketch
- Learn how Marxan complements SeaSketch in the planning process
- Identify and prioritize conservation features and targets

# **AGENDA AT A GLANCE**

## DAY 3: Setting Up Marxan Inputs

**Main Objective:** Finalize key parameters for Marxan analysis

- Define and weigh cost layers for spatial planning
- Create lock-out areas using SeaSketch
- Synthesize all inputs to prepare for scenario modeling

*(Note: Agenda may adjust slightly depending on group needs and discussion pace.)*

# AGENDA AT A GLANCE

The slide features a clean, modern design with a white background. In the top left corner, there is a large blue circle with a gradient. In the top right corner, there are three smaller blue circles of varying sizes. The bottom of the slide is decorated with a series of overlapping, wavy blue shapes that create a sense of movement and depth. The main title is centered at the top in a large, bold, dark blue font. Below the title, there are two columns of bullet points, each starting with a small blue circle. The text is in a clean, sans-serif font. At the bottom, a quote is written in a smaller, italicized font, set against a dark blue background that matches the wavy shapes.

# How we will work Together

- Blended and Interactive Sessions
- Expert-led Presentations
- Hands-on SeaSketch Training
- Marxan Input Collection
- World Café Discussions
- Daily Reflections

*Our goal is to create an environment where all voices are heard and all expertise is valued as we work together to advance Belize's marine spatial planning.*





**Let's Meet the  
Technical  
Experts**

# CZMAI Team



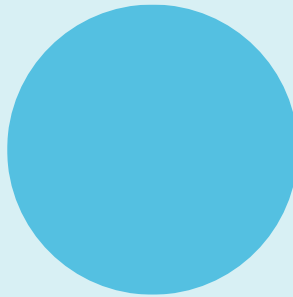
**Delwin  
Guevara**

*GIS Mapping and Spatial  
Analyst*



**Janel  
McNab**

*Belize MSP  
Coordinator*



# Marxan Team



Kate  
Longley-Wood

*Marine Spatial Planning  
Science Manager – TNC  
Global*



Rick  
Tingey

*Principal – S3  
Spatial Support  
Systems LLC*



# SeaSketch Team



**Abby Meyer**  
Developer

**Tim Welch**  
Developer

**Chad Burt**  
Lead Developer

**Will McClintock**  
Director

**Peter Menzies**  
Analyst Developer



# House Keeping



## **Arrival & Registration**

Please arrive at least 15 min. before, so you have time to check in. The workshop begins promptly each day.



## **Break Times**

**Morning Break:** 10:30 – 10:45 AM

**Lunch Break:** 12:30 – 1:30 PM (Lunch provided. Tickets will be distributed)

**Afternoon Break:** 3:00 – 3:10 PM



## **Wi-Fi Access**

Free Wi-Fi available. **WIFI: Bwplusbiltmore**



## **Restrooms**

Restrooms are located outside

# House Keeping



## **Phones & Devices**

Please silence phones and devices during sessions.  
Laptops/tablets welcome for note-taking and workshop tasks.



## **Engagement**

Please participate actively in all activities.  
Group discussions and team tasks are key parts of the workshop.



## **Feedback**

Daily feedback will be conducted.



## **Health & Safety**

If you feel unwell, inform a facilitator privately.

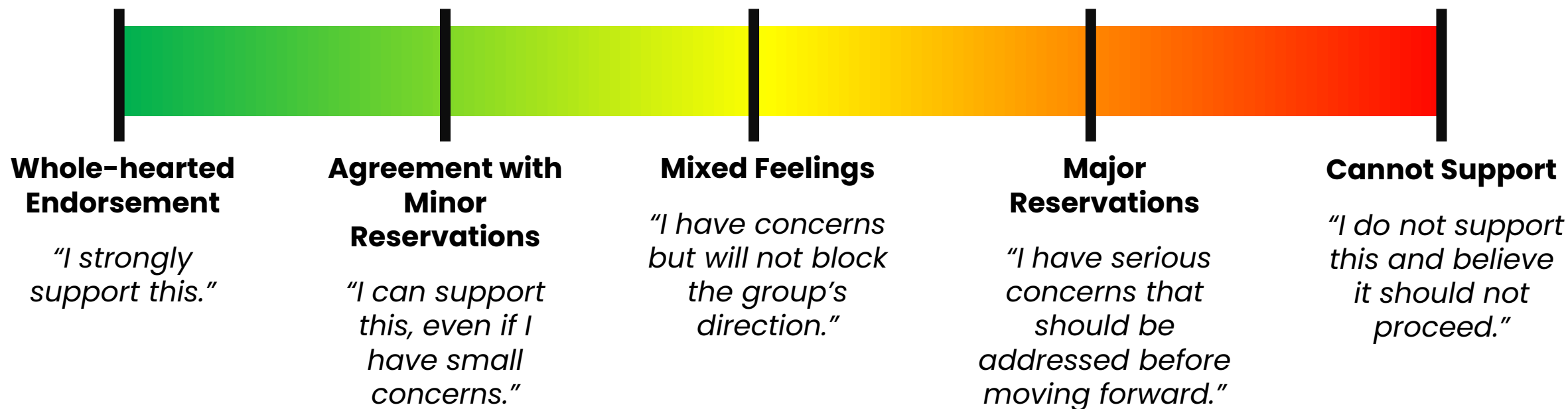
# GROUND RULES FOR PARTICIPATION

- 1. Assume Positive Intent** – We're here to co-create, not compete.
- 2. One Mic, Many Voices** – Let's ensure everyone can speak.
- 3. Use the Parking Lot** – If a discussion is deep but off-topic, we'll note it and revisit if time allows.
- 4. Yes, And...** – Encourage building on each other's ideas
- 5. Embrace Learning and Discomfort** – Some sessions will be new or technically complex; let's help each other through.
- 6. Be Present** – Phones on silent, laptops for workshop tasks only.
- 7. Respect Time and Process** – Stick to time slots, rotation rules, and prompt transitions.



# Simplified Gradients of Agreement Scale

To facilitate efficient and transparent decision-making during the workshop, we will utilize Gradients of Agreement Scale when needed:



**HOW TO USE:** When asked, put your hand up for the item that best represents your position





# TECH CHECK!

Everyone should have:

- A laptop
- Registered SeaSketch account
- Access to digital resources  
and any pre-read materials
- Power cable

***Please raise your hand now if you need assistance!***





# DAY 1 - AGENDA

**Focus:** Set the context, connect participants, and introduce core tools

9:00 am	<b>Welcome &amp; Opening Remarks</b>	Context, purpose, and goals
9:15 am	<b>Introductions and Ice-Breaker: Geospatial Bingo</b>	Creative networking (e.g., "Geospatial Bingo")
9:45 am	<b>Workshop Overview</b>	Agenda, ground rules, tech check, and logistics
10:00 am	<b>Where are we now in the BSOP MSP process?</b>	
10:15 am	<b>Marxan and SeaSketch Overview</b>	Overview of tools/platforms (e.g., SeaSketch)
10:45 am	<b>Coffee Break</b>	
11:00 am	<b>Overview of Ocean Use Survey and Results</b>	
11:45 am	<b>Overview of SeaSketch Planning Tool</b>	Tool walkthrough and guided activities
12:30 pm	<b>Lunch</b>	
1:30 pm	<b>Training on the use of SeaSketch Planning Tool</b>	Small groups test the tool, create outputs
2:30 pm	<b>Coffee Break</b>	
3:15 pm	<b>Training on the use of SeaSketch Planning Tool (Continued)</b>	Group debrief and input for Day 2
4:30 pm	<b>Wrap up: Question &amp; Answer Reflection</b>	
5:00 pm	<b>Adjourn</b>	



# Day 1: SeaSketch

Belize Sustainable Ocean Plan  
Geospatial Workshop

April 14, 2025



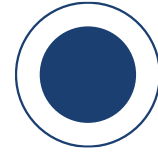
# Where are we now?

April 14, 2025  
10:00 – 10:15



## Session Goal:

- Provide overview of progress on BSOP since last stakeholder workshop in May 2024.
- Overview of next steps to get to Milestone 6.



Understanding the context of the workshop with respect to the timeline of the BSOP process.

**Expected Outcome:**



# Presenter:



## Janel McNab

Marine Spatial Planning  
Coordinator – CZMAI

Responsible for providing overall & day to day logistical & coordination support for the BSOP



May 2024

# Multi-Stakeholder MSP Workshop 1: Assessment for Planning

May 8-11, 2024



May – September 2024

# Milestone 4 Public Engagement & Validation sessions





# May – September 2024



## Consultations across Coastal Communities

# October 2024

## Milestone 5

- Update to the Integrated Coastal Zone Management Plan*
- National Marine Spatial Plan Policy*
- October 2024 - June 2025 (9 months)*
- Consultants IH Cantabria*



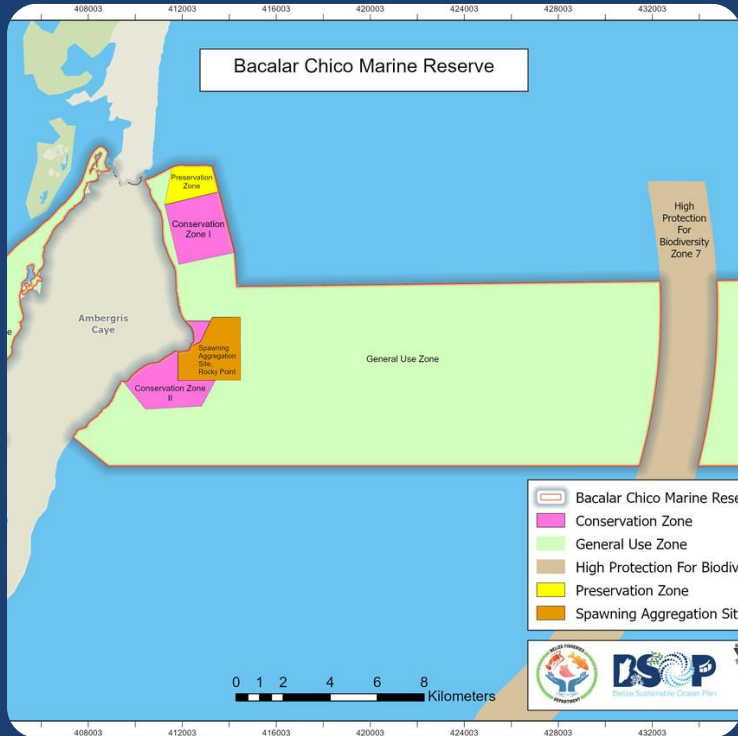




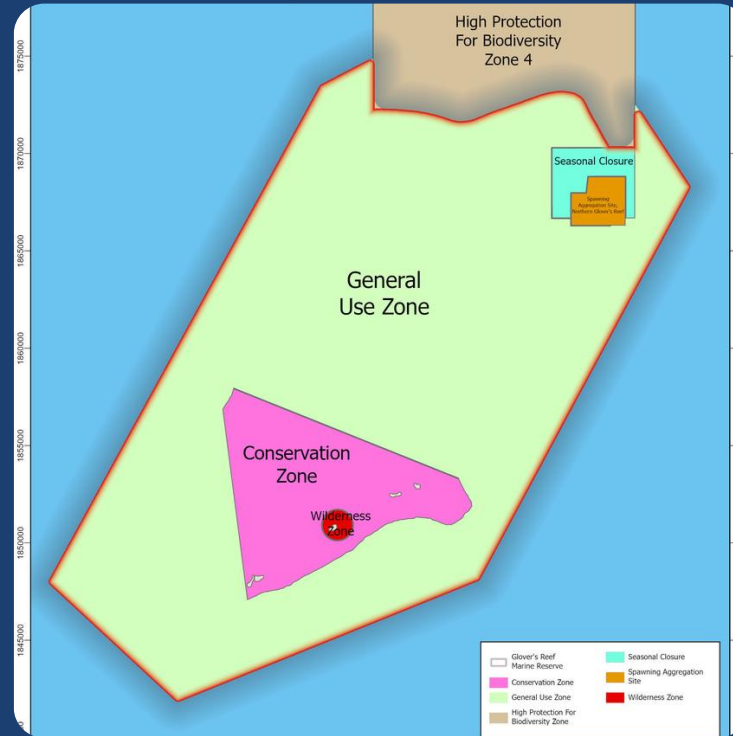
November 2024  
Submission of  
Milestone 4  
Proposal

**25% BPZ**

November 2024



Bacalar Chico Marine Reserve



Glover's Reef Marine Reserve



Lighthouse Reef Atoll Marine Reserve



December 2024

Barbados-Belize

# MSP Peer-to-Peer Knowledge Exchange

December 2-6, 2024. Belize



January – March 2025

# Ocean Use Survey

- Phase 2
- Filling in gaps



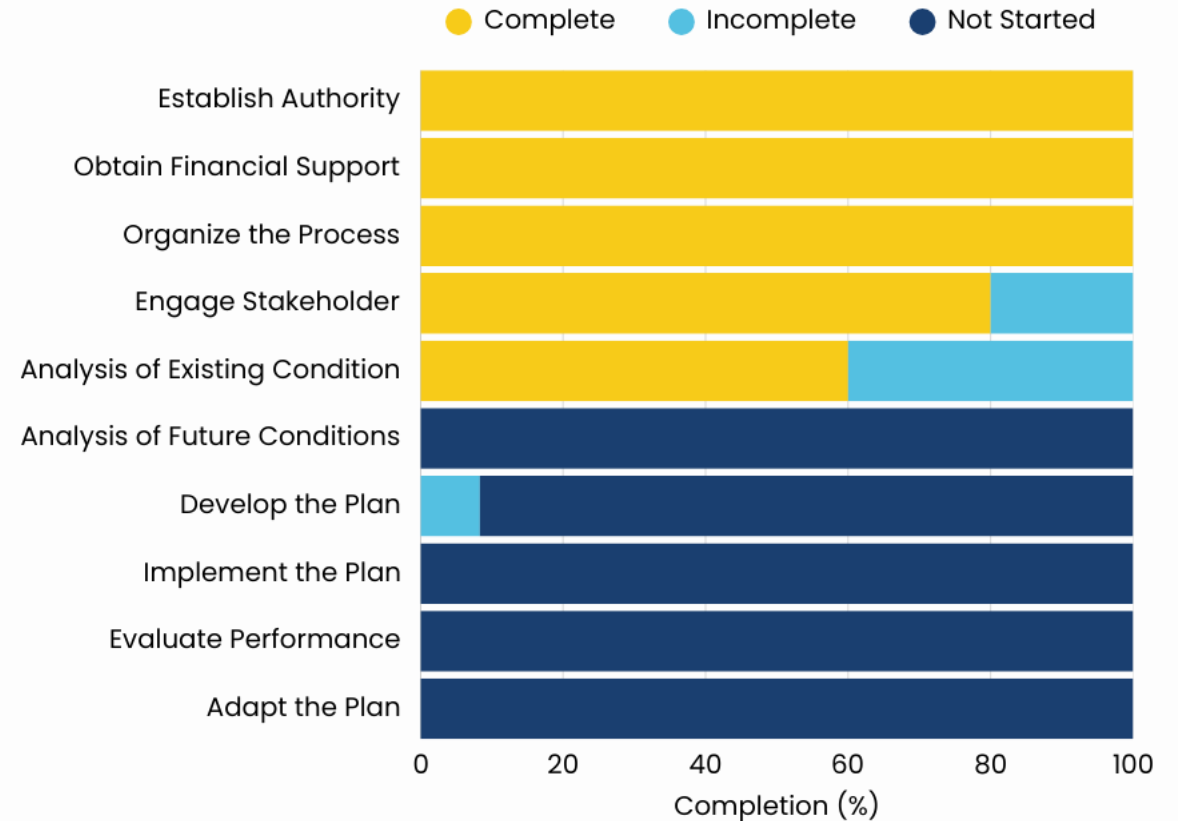
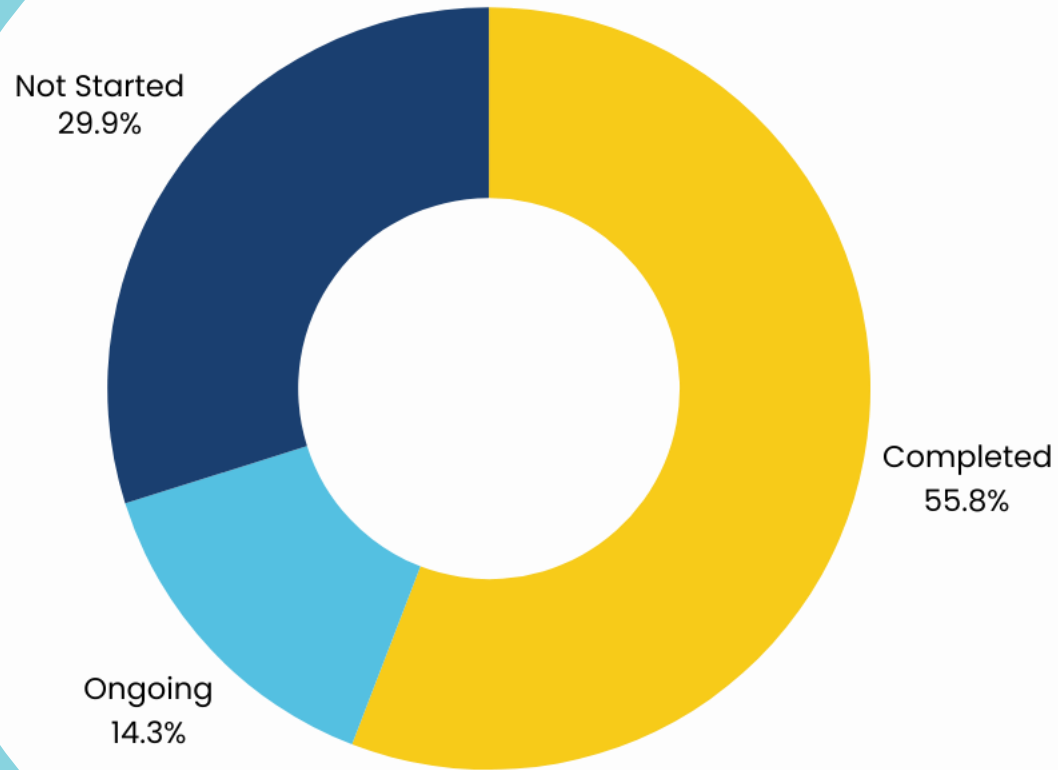


# January – March 2025



April 2025

# Process Update





# April 2025 Milestone 6

- Future needs (Economic, Social, Cultural)
- Future Scenario Planning
  - *Governance X Climate Change*
- Identification and Designation of BPZ to cover up to 30%
  - *Zoning Approach and Framework*
  - *MPA Design Criteria*
  - *General Zoning Framework - Use Zones (Single and Multiple)*



Analysis of Existing  
Conditions



Analysis of Future  
Conditions





QUESTIONS



The background of the slide features a close-up photograph of water ripples, creating a complex pattern of light and dark blue. A large, solid light blue circle is positioned on the left side, partially overlapping the water image. A thin white vertical line is located to the left of the circle.

# Marxan and SeaSketch Overview

April 14, 2025  
10:15 – 10:45

## Session Goal:

- Provide a high level overview of the geospatial tools and their roles in the BSOP process



Understanding of how geospatial tools are used in MSP and how they complement one another.

**Expected Outcome:**



# Presenters



Will McClintock

*Director,  
McClintock Lab –  
SeaSketch*



Abby  
Meyer

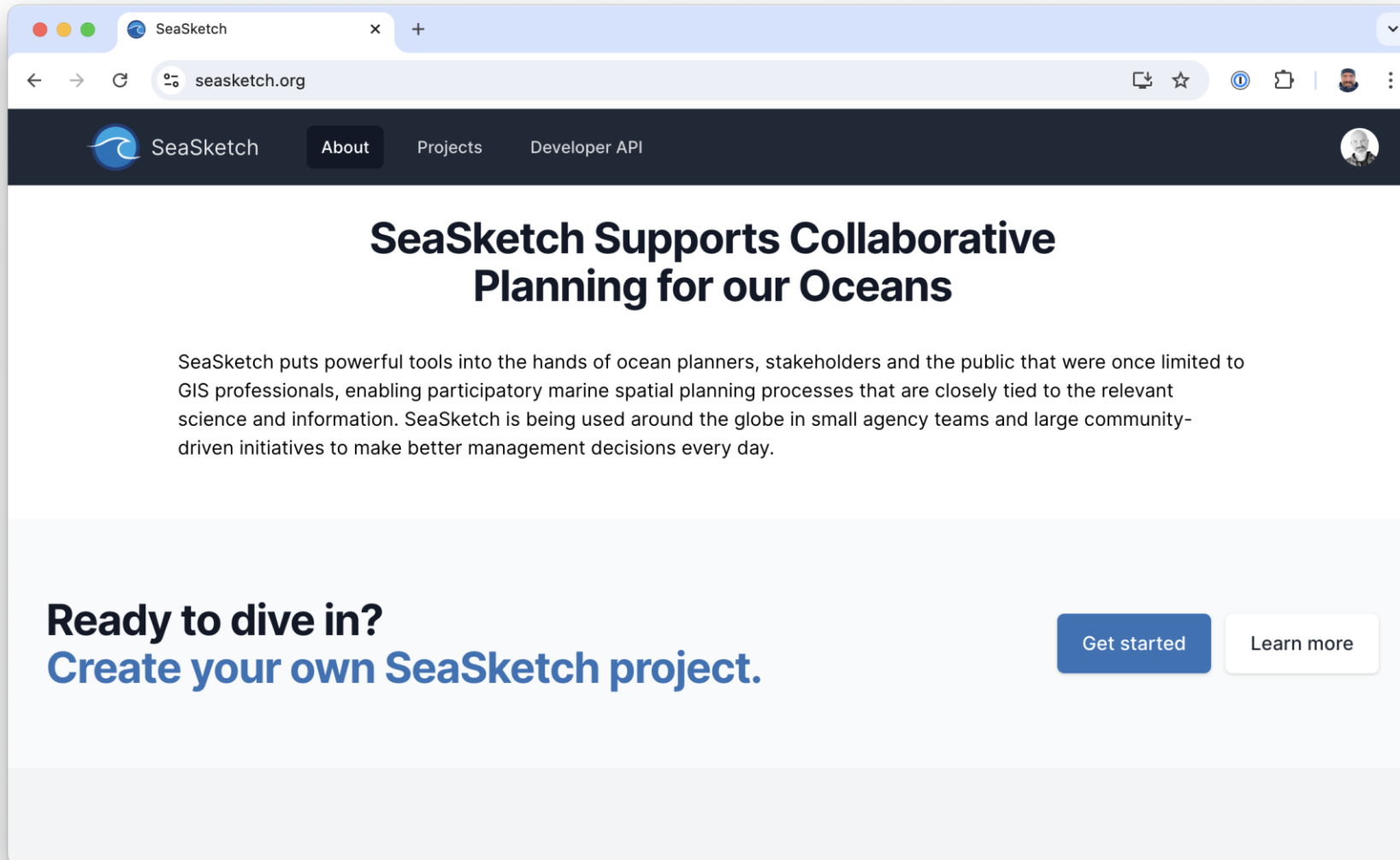
*Developer,  
McClintock Lab –  
SeaSketch*



Peter  
Menzies

*Analyst Developer,  
McClintock Lab –  
SeaSketch*

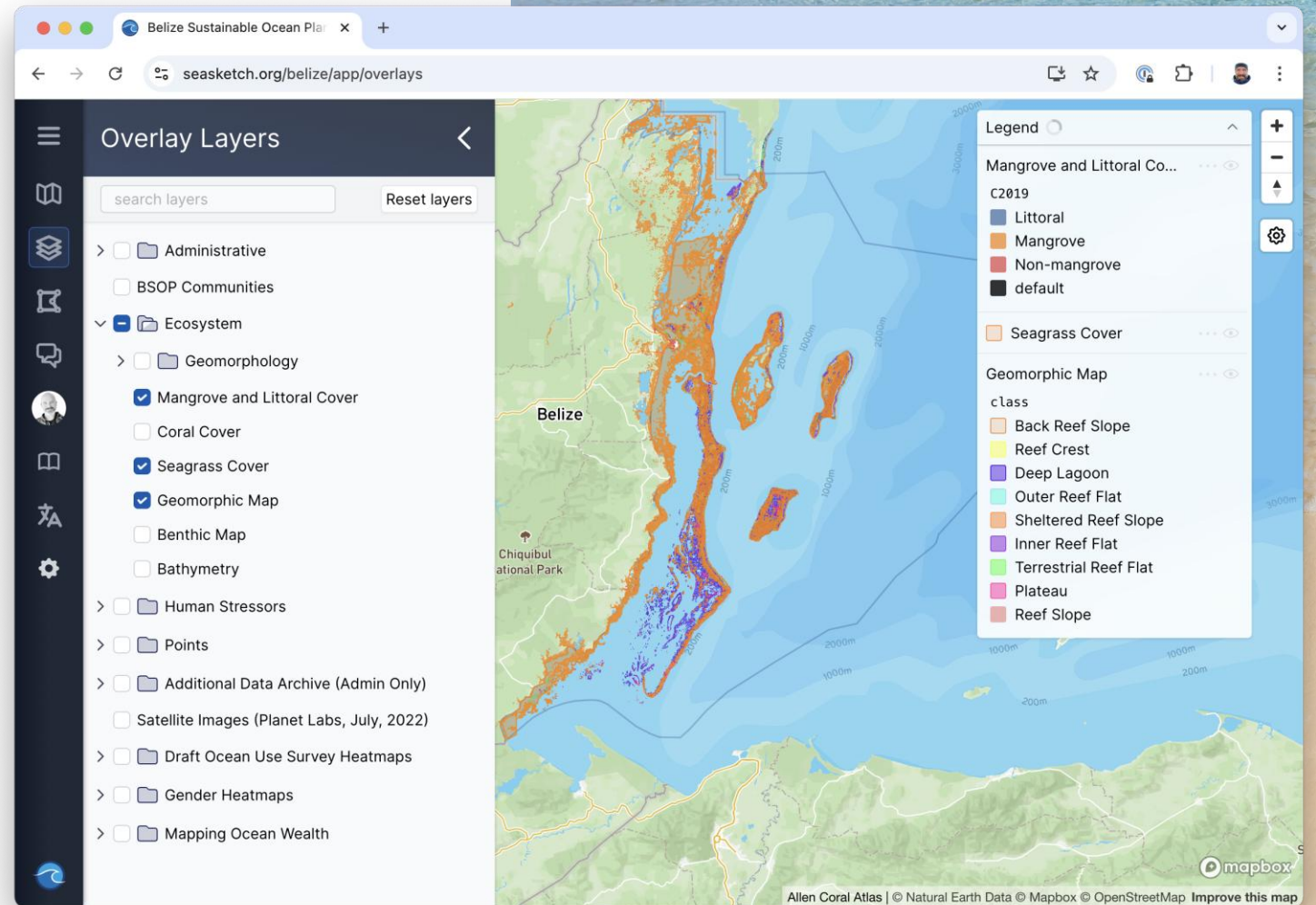
# SeaSketch Platform



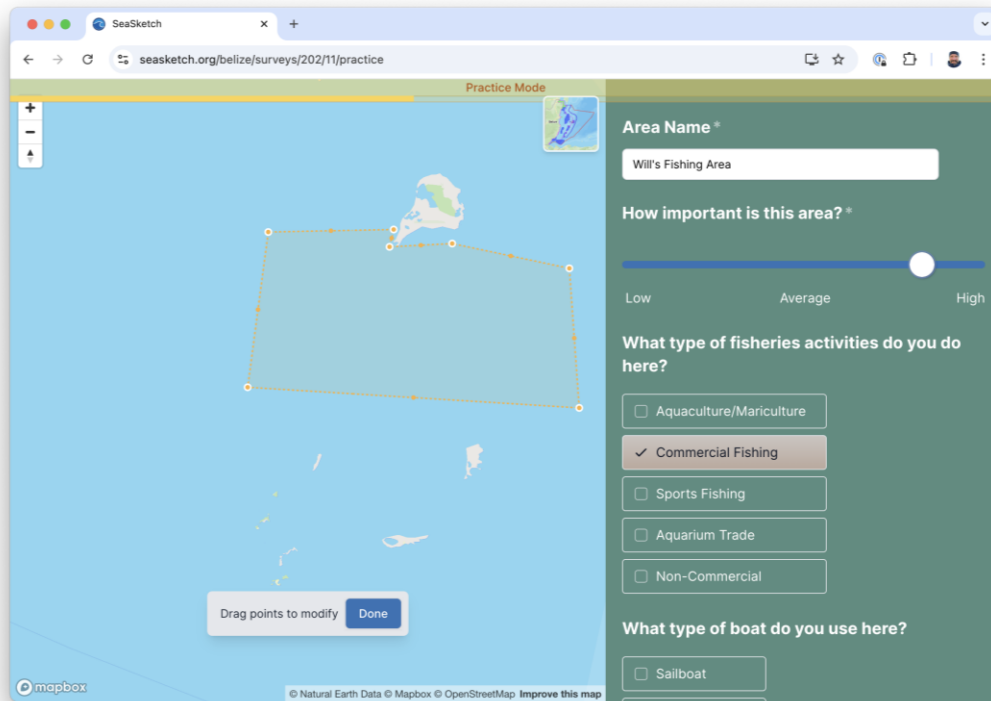


# SeaSketch: GeoPortal

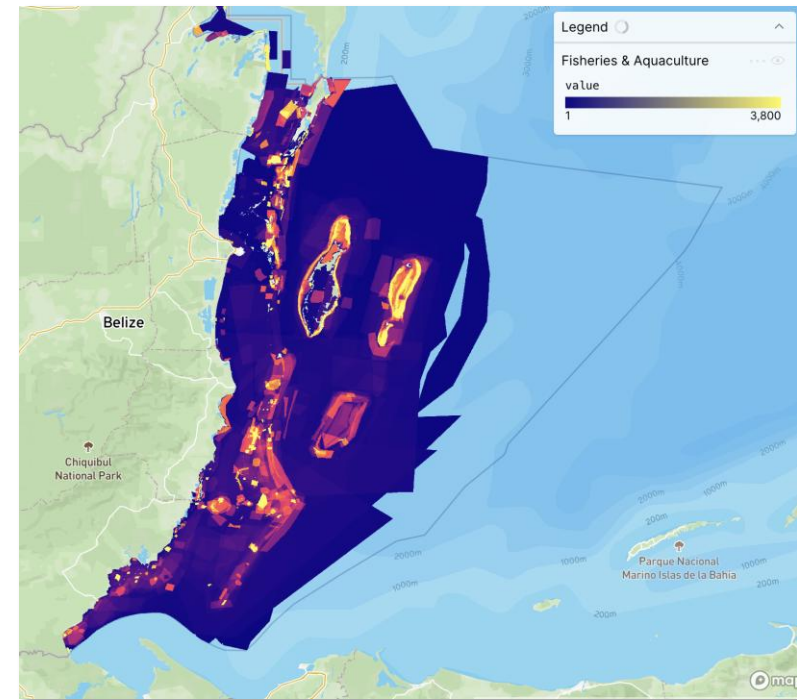
- Visualize and download data.
- Access metadata.
- [Seasketch.org/belize](https://seasketch.org/belize)



# SeaSketch: Survey Tool

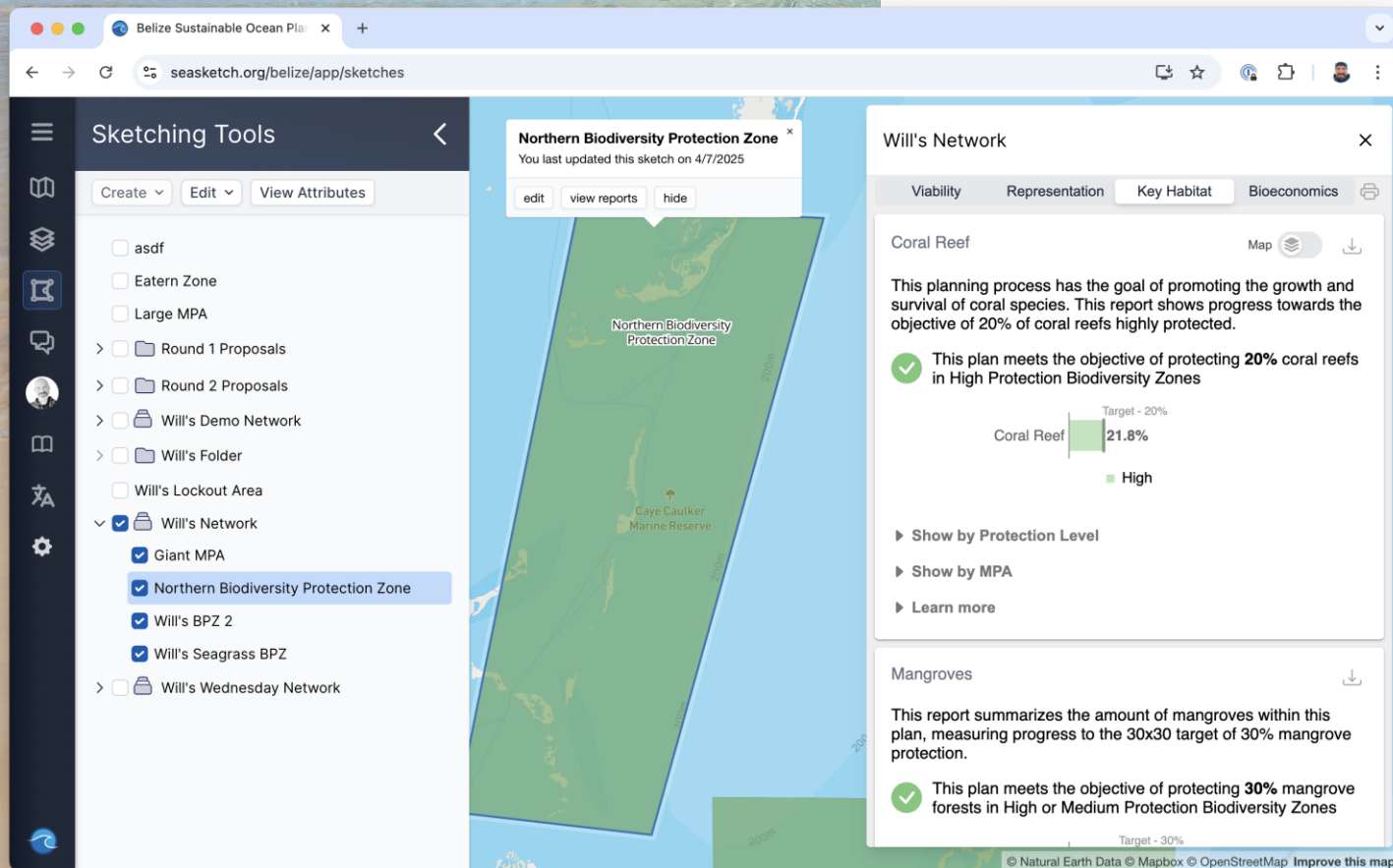


Gathered spatial information  
on ocean uses and values



Heatmaps show the  
distribution of valued places  
for all ocean sectors

# SeaSketch: Planning Tool

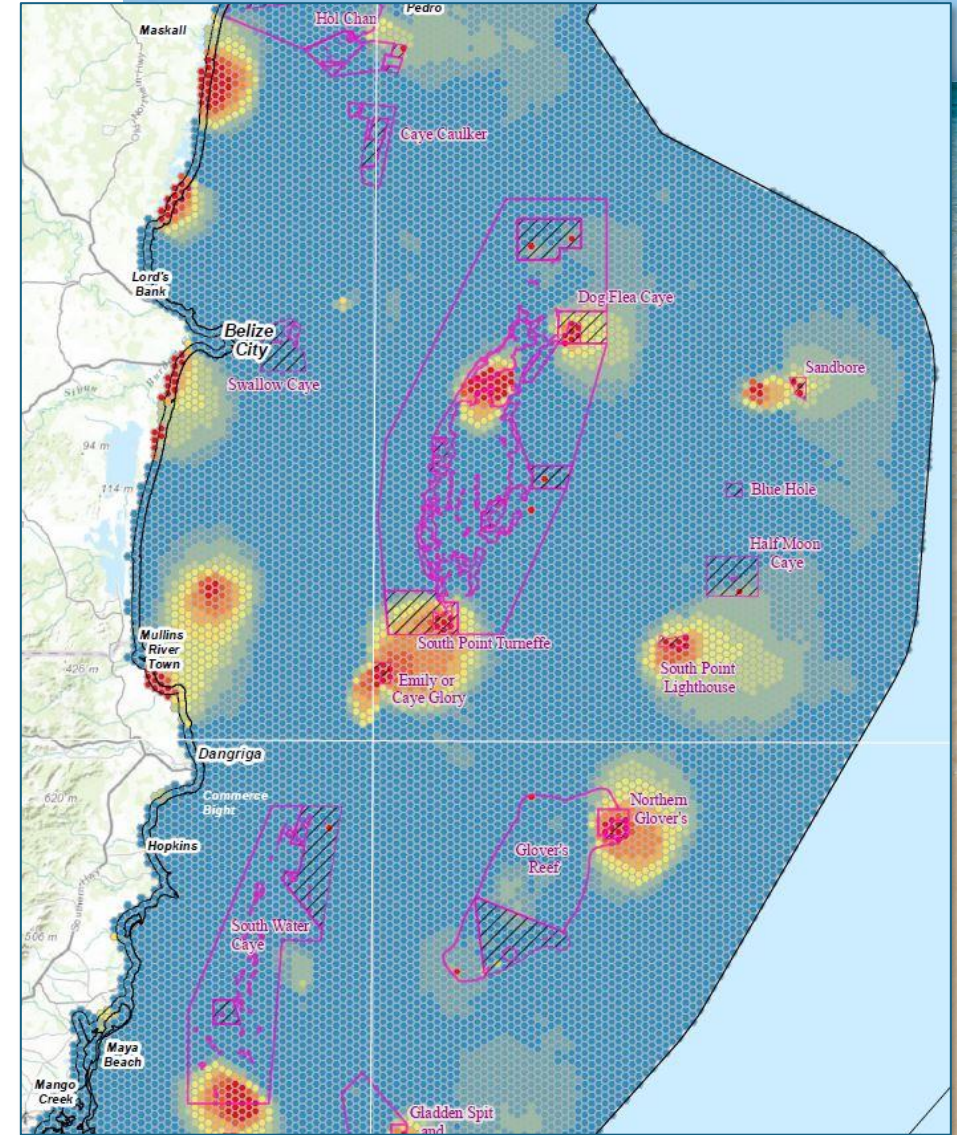


- Sketch and evaluate biodiversity protection zones.
- Collaborate with others by sharing and discussing plans.



# Marxan

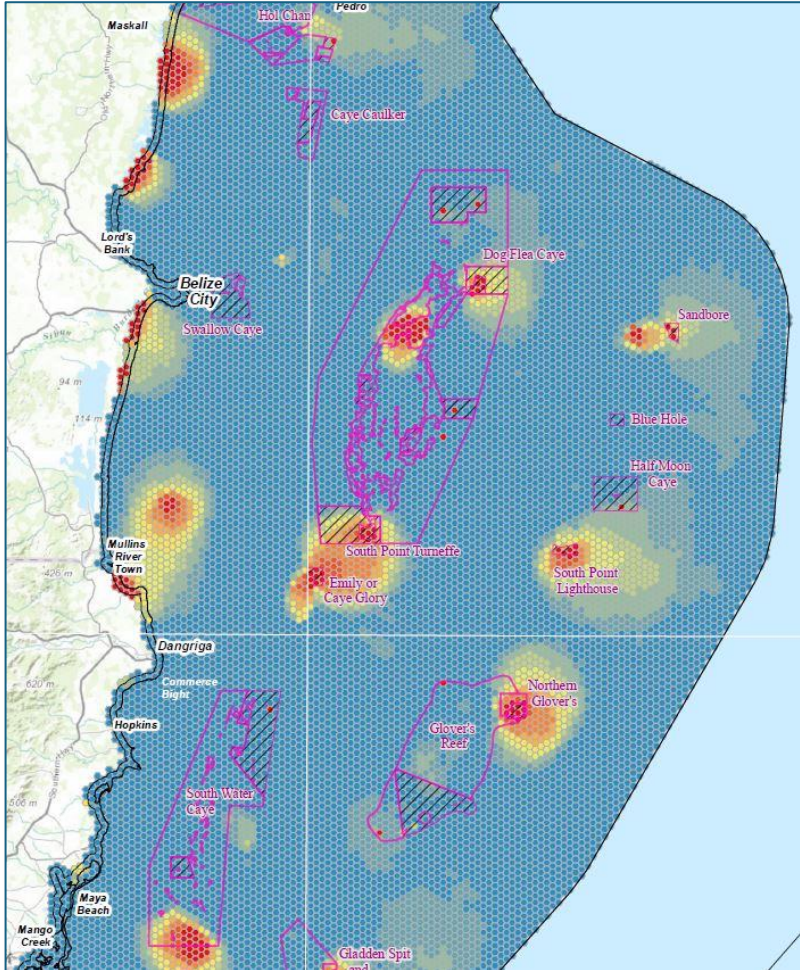
- **Data Exploration Tool** that can help identify areas that:
- **Maximize** representation (goals) across multiple targets/criteria
- **Minimize** overall area, or overlap with undesirable areas ("costs")





# Marxan & SeaSketch are Complimentary

## Marxan

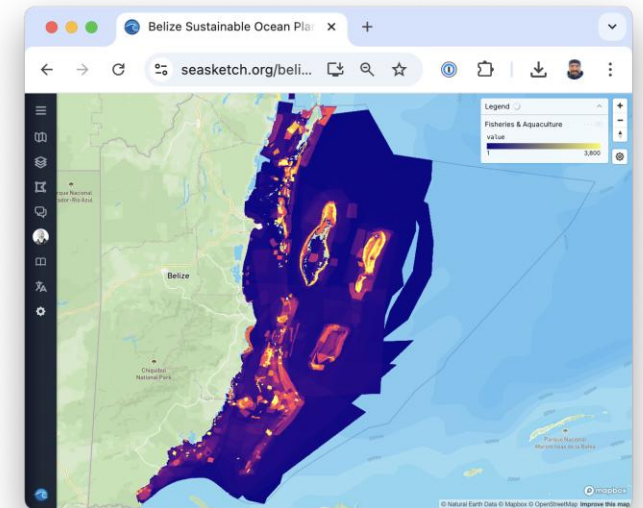


Marxan outputs can be brought into the SeaSketch planning tool as a contextual layer and/or for participatory mapping purposes (users can comment using the forum)



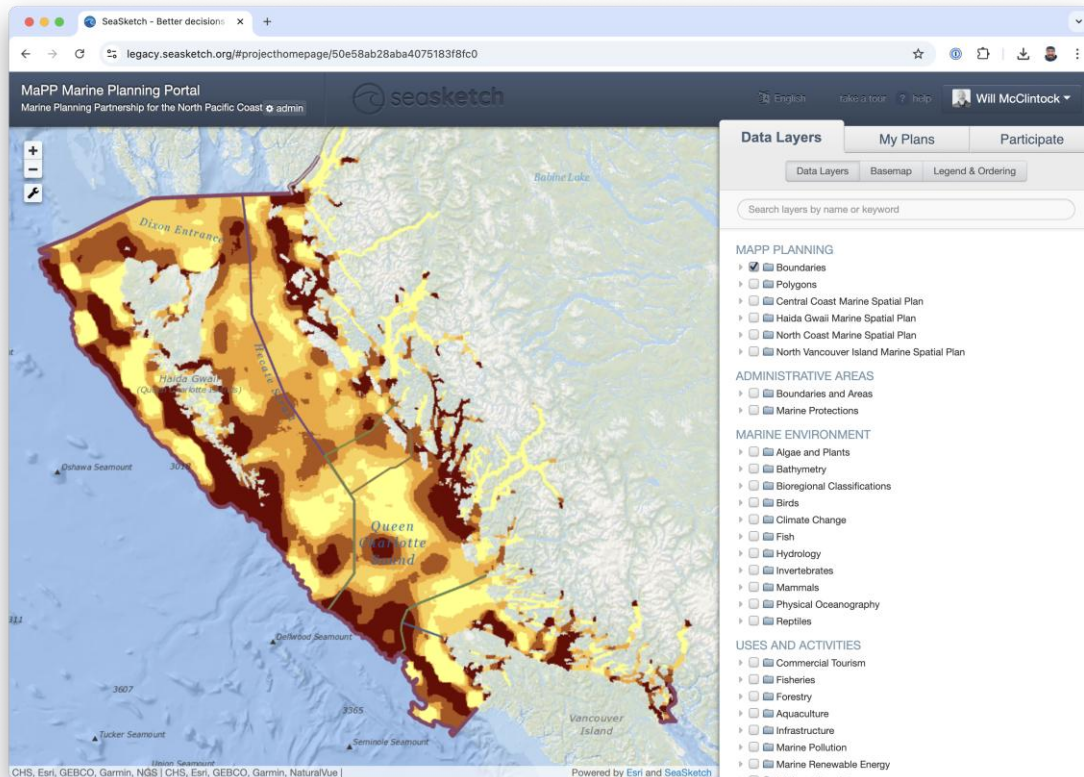
Outputs from the SeaSketch Ocean Use Survey can be brought into Marxan as a feature or cost layer

## SeaSketch

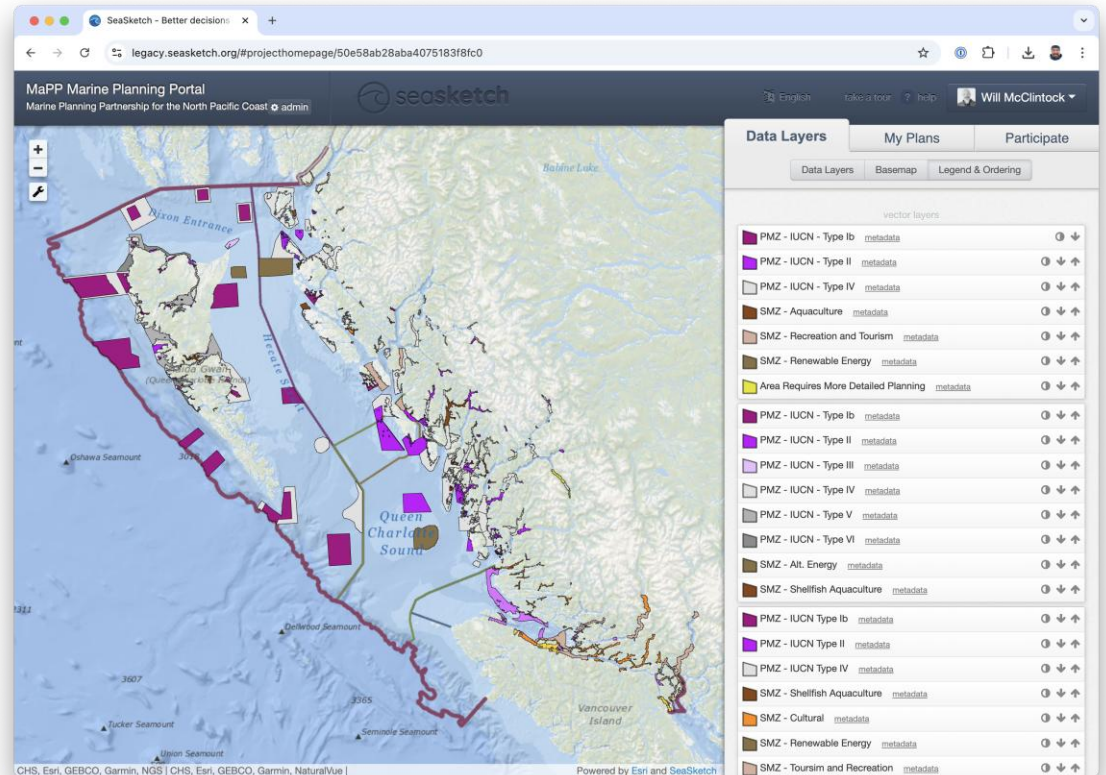




# Example 1: British Columbia

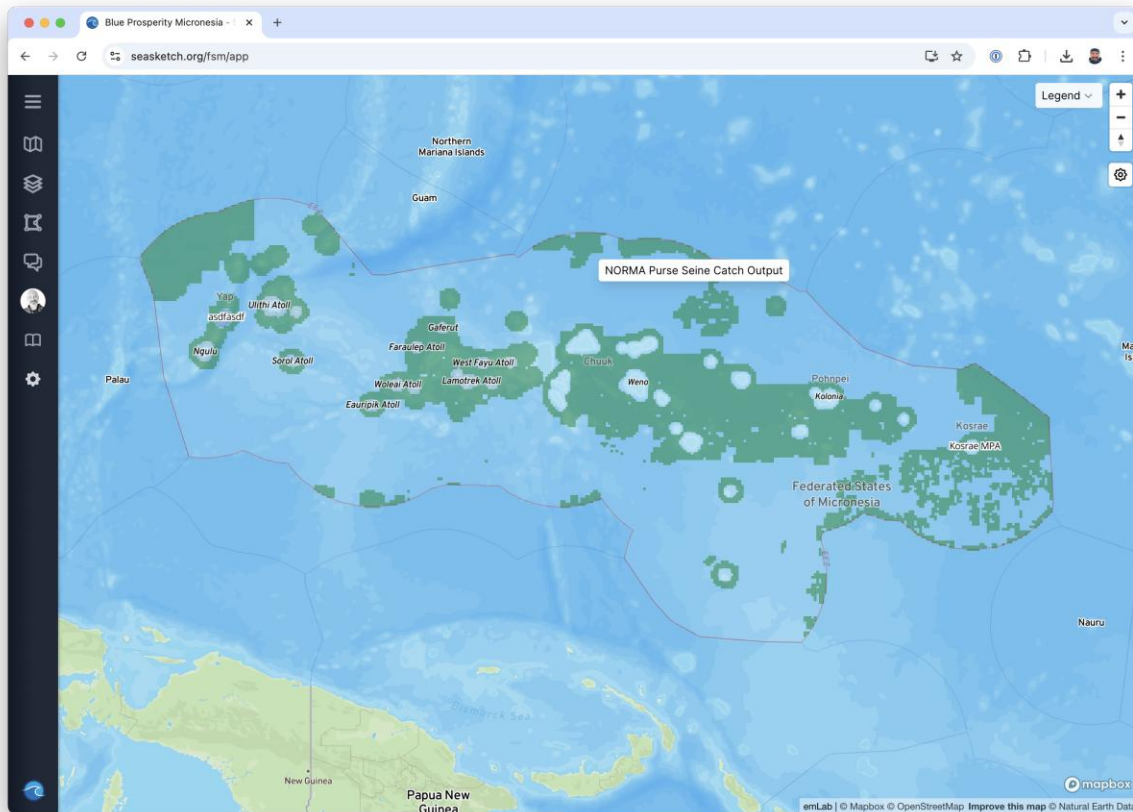


Marxan output in SeaSketch

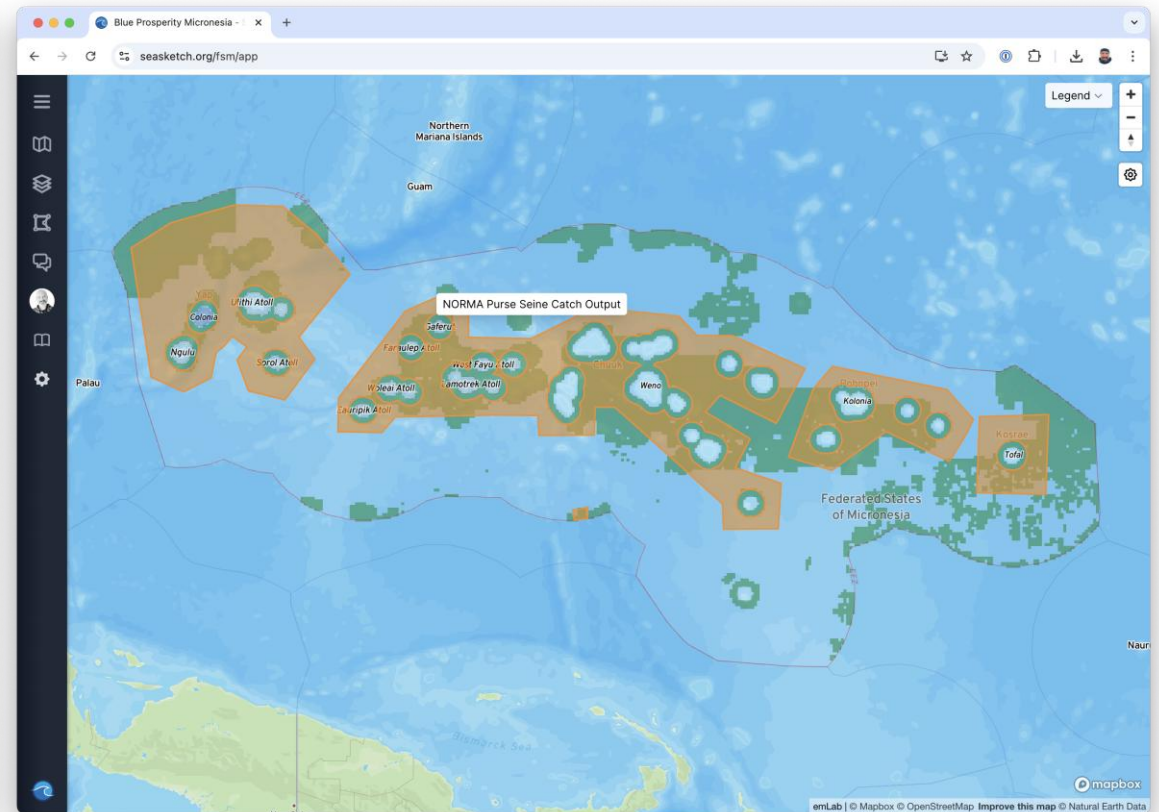


User-drawn MPAs in SeaSketch

# Example 2: Micronesia



Marxan output in SeaSketch



User-drawn MPAs in SeaSketch





QUESTIONS



**Coffee Break**  
9:55 – 10:10



# Overview of Ocean Use Survey & Results

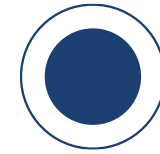
April 14, 2025  
11:00 – 11:45





## Session Goal:

- Provide an overview of OUS methodology and results.
- Present feedback mechanism



Understanding the methodology of the OUS, what data were collected, how data were analyzed, and how they can provide feedback.

## Expected Outcome:



Presenter:



**Delwin Guevara**

GIS Mapping and Spatial  
Analyst – CZMAI



# OVERVIEW

- What is Seasketch?
- Review of methodology
- Overview of Data Collection
- Overview of Results
- Access Data
- 
-



# What is Seasketch?



Is a decision support platform with sketching tools for collecting mapped-based surveys.

It is a platform specifically designed for MSP as it allows for all its data layers, designs and analytics to be publicly accessible.

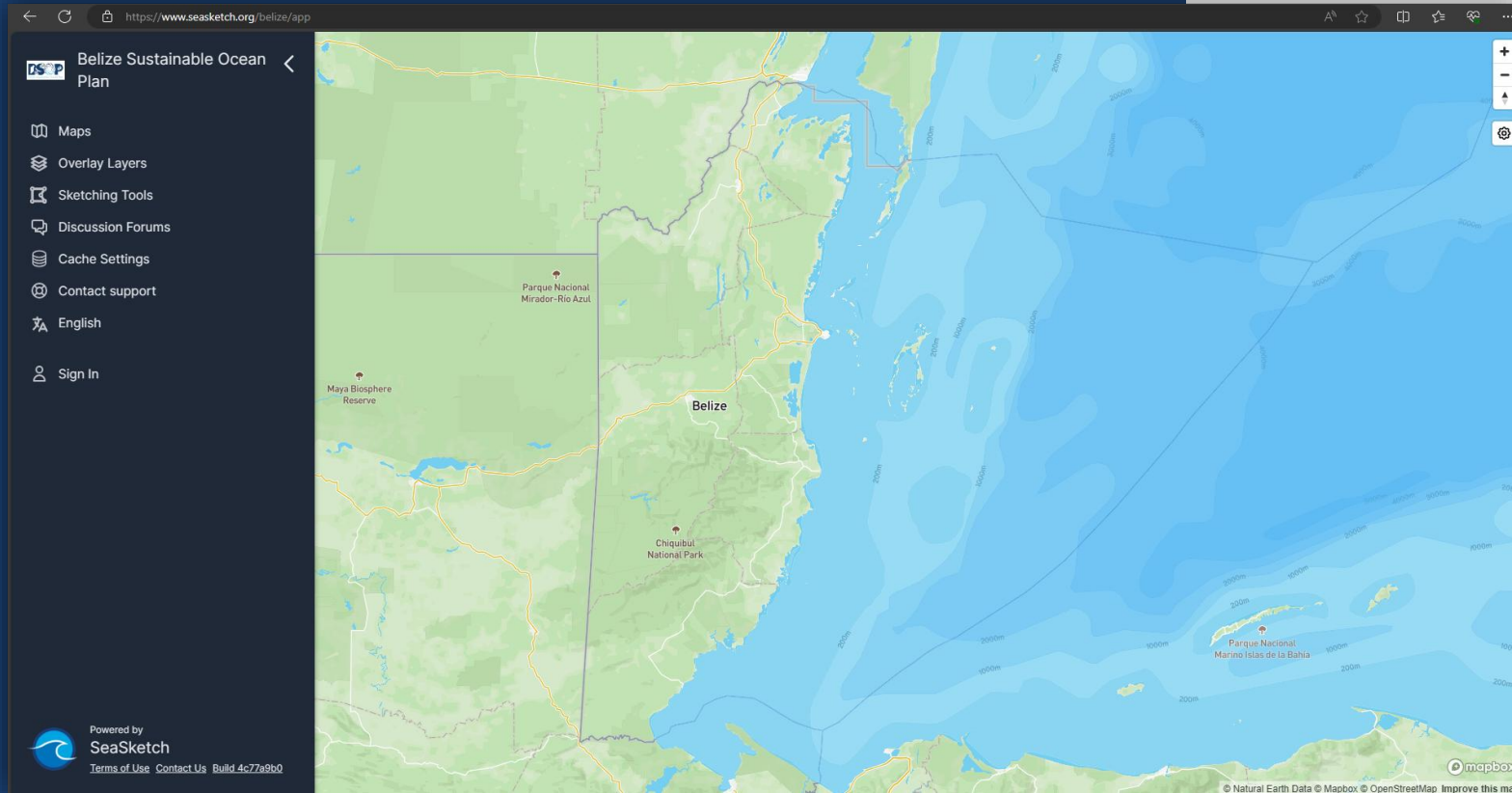




# UC SANTA BARBARA



SeaSketch was developed by researchers at the **McClintock Lab** at the Marine Science Institute of the **University of California Santa Barbara (UCSB)**



The background is a collage of four images: top-left shows a tropical beach with palm trees and a small boat; top-right shows a close-up of turquoise water with ripples; bottom-left shows an aerial view of a coastal town with houses and a road; bottom-right shows a vibrant coral reef with many yellow-striped snappers.

# WHY ARE WE USING SEASKETCH?



# WHY ARE WE USING SEASKETCH?

Using SeaSketch, a decision support tool, BSOP can determine current conditions and plan for future uses.

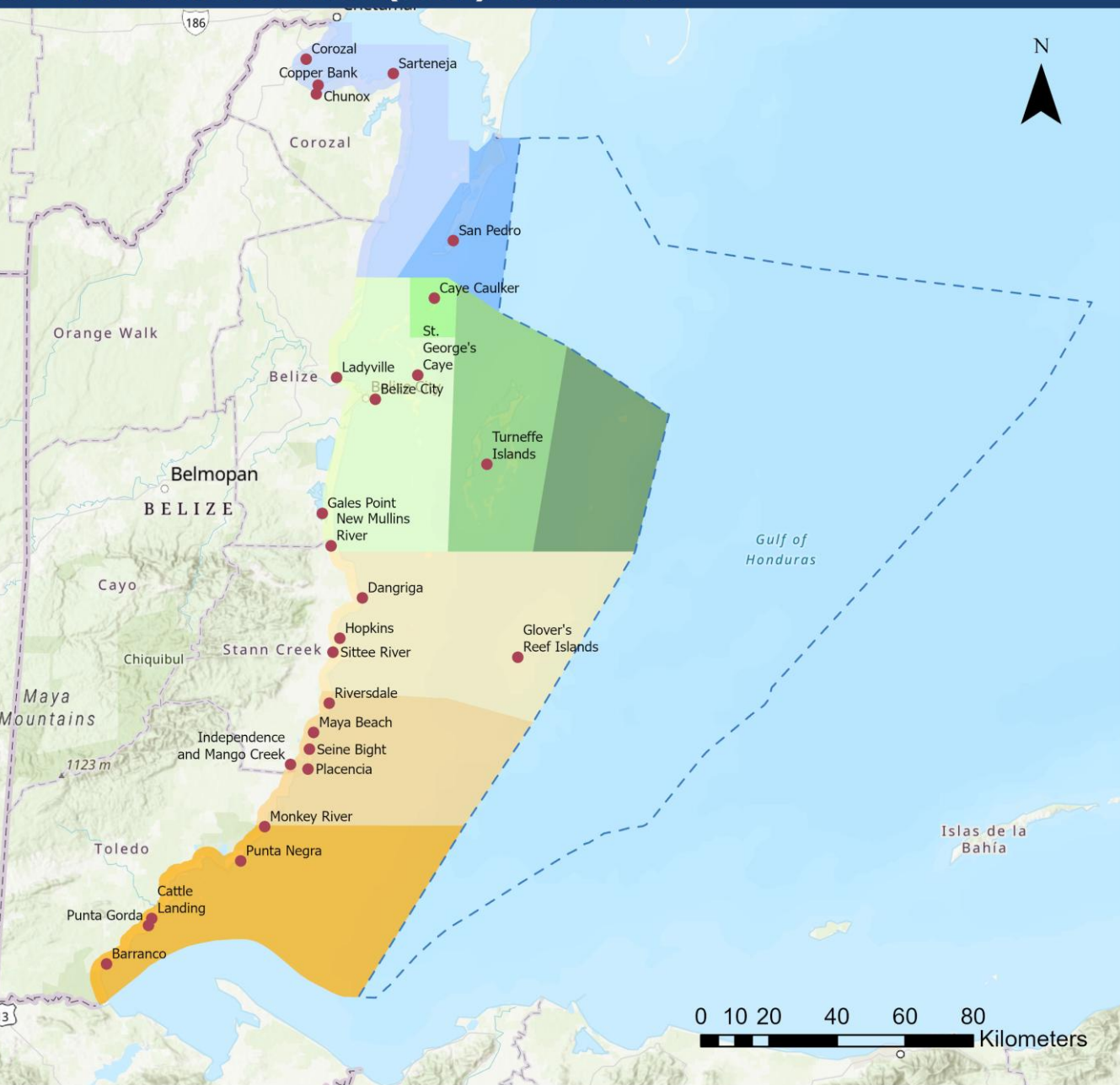
# WHY ARE WE USING SEASKETCH?

This can be done with SeaSketch's sketching tools, which provide the spatial information needed for the MSP process. SeaSketch is also vital to the process as it represents the core principles of MSP by fostering inclusivity and equity as it augments planning contributions from technical stakeholders and the general public.



# WHY ARE WE USING SEASKETCH?

Decision-making is further supported by SeaSketch as it can be coupled with other support and analytic tools such as MARXAN within the planning process.



# Looking at Coastal Communities

- 27 Coastal Communities
- Turneffe Atoll
- Glovers Atoll
- Lighthouse Atoll



# Partnerships and Collaborations

Enumerators:



University of Belize







# One-on-one interview







OCEAN USE SURVEY

**COMMERCIAL FISHERS**

CONSULTATION INVITATION



FEB 9 2024



5 PM-7 PM



SAN PEDRO  
Town Council  
Conference Room

FOR MORE INFORMATION CONTACT US:

 <http://bsop.coastalzonebelize.org>  [bsop@coastalzonebelize.org](mailto:bsop@coastalzonebelize.org)  223-5739 or 223-0719



# Focus Groups





# Site visit and Remote





# Meet the Team













## Welcome, Ocean Users!

We are interested in learning about how you use and value ocean space. This survey will ask you to identify areas of importance within the ocean by drawing on the map and indicating the relative value of those areas to you.

**Your individual responses will be kept confidential.** We will summarize and generalize information across multiple respondents to protect your privacy. The information will be used to create data to be used in an upcoming ocean planning process.

Click [here](#) to view an example summary heat map depicting valued commercial fishing areas in the Azores.

Need help? Contact [Will McClintock](#).

Begin

🌐 Language

⚙️ Settings





## Welcome, Ocean Users!

We are interested in learning about how you use and value ocean space. This survey will ask you to identify areas of importance within the ocean by drawing on the map and indicating the relative value of those areas to you.


**Your individual responses will be kept confidential.** We will summarize and generalize information across multiple respondents to protect your privacy. The information will be used to create data to be used in an upcoming ocean planning process.

Click [here](#) to view an example summary heat map depicting valued commercial fishing areas in the Azores.

Need help? Contact [Will McClintock](#).

Begin

 Language

 Settings



### Welcome, Ocean Users!

We are interested in learning about how you use and value ocean space. This survey will ask you to identify areas of importance within the ocean by drawing on the map and indicating the relative value of those areas to you.

**Your individual responses will be kept confidential.** We will summarize and generalize information across multiple respondents to protect your privacy. The information will be used to create data to be used in an upcoming ocean planning process.

Click [here](#) to view an example summary heat map depicting valued commercial fishing areas in the Azores.

Need help? Contact [Will McClintock](#).

Begin

🌐 Language

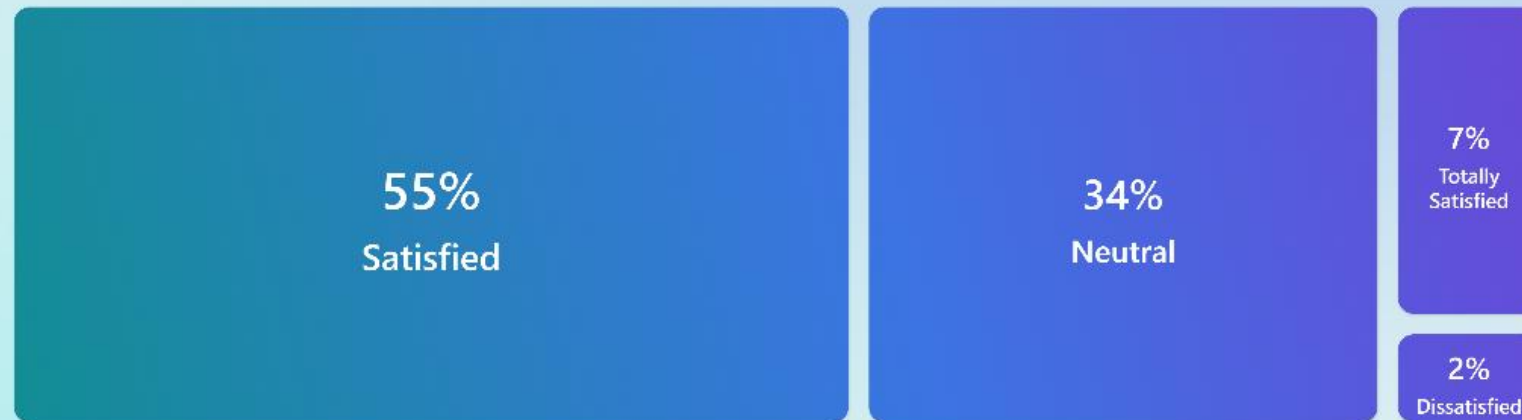
⚙️ Settings

# Lessons Learnt

- Online vs Offline
- Virtual vs In-person
- Focus Group Sessions

41 responses submitted

Fisheries Sector Using a scale of 1 \*Totally Dissatisfied) to 5 (Totally /very Satisfied)



Treemap

Bar



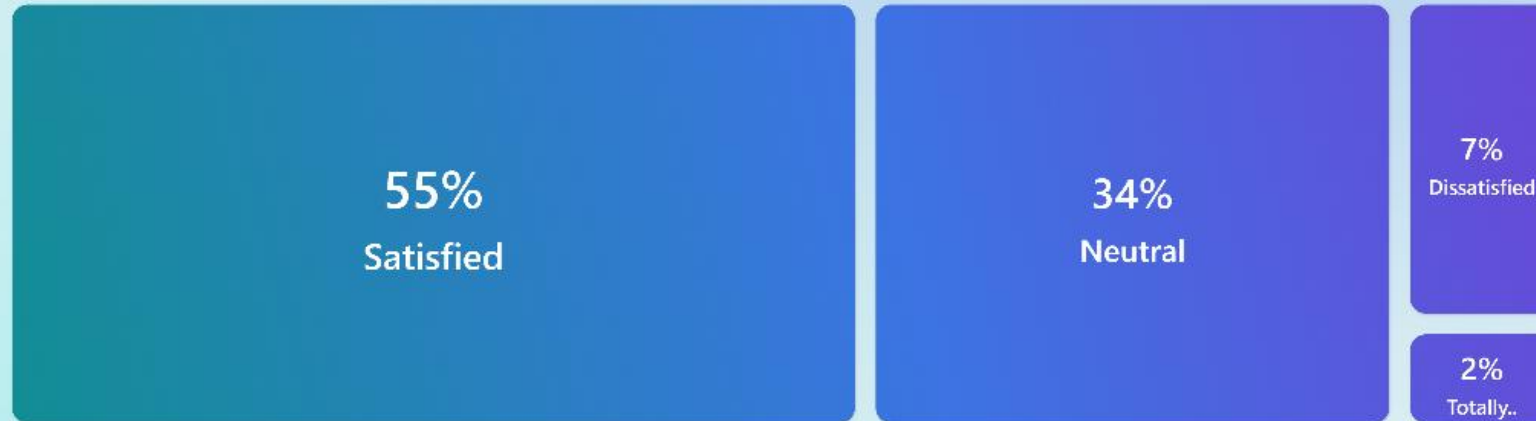
1 of 6





41 responses submitted

Tourism Sector Using a scale of 1 \*Totally Dissatisfied) to 5 (Totally /very Satisfied)



Treemap

Bar

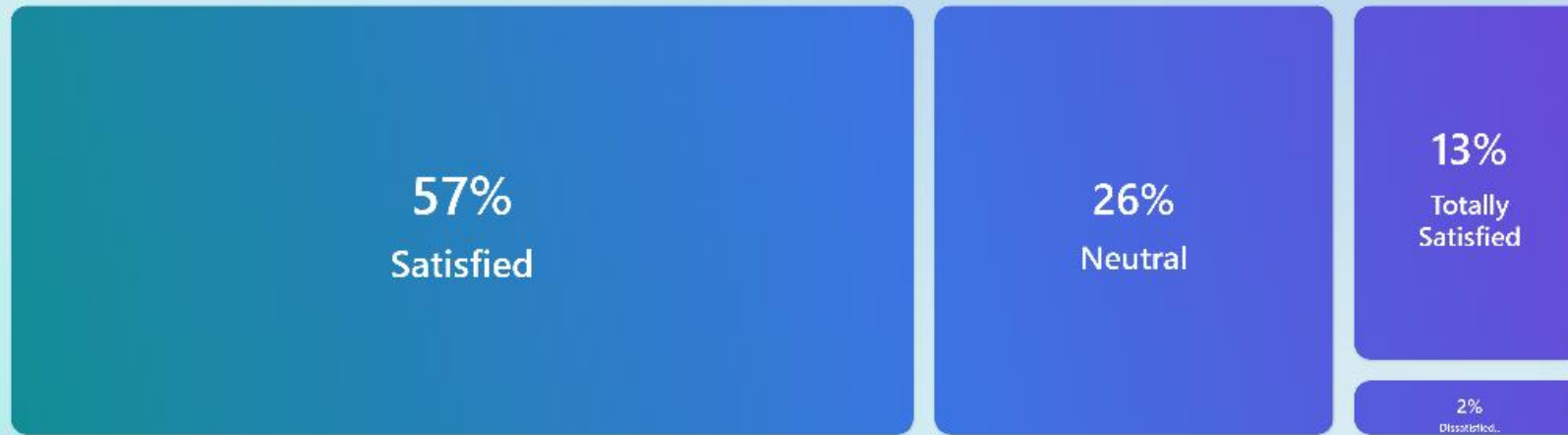


2 of 6



41 responses submitted

Maritim Administration Using a scale of 1 \*Totally Dissatisfied) to 5  
(Totally /very Satisfied)

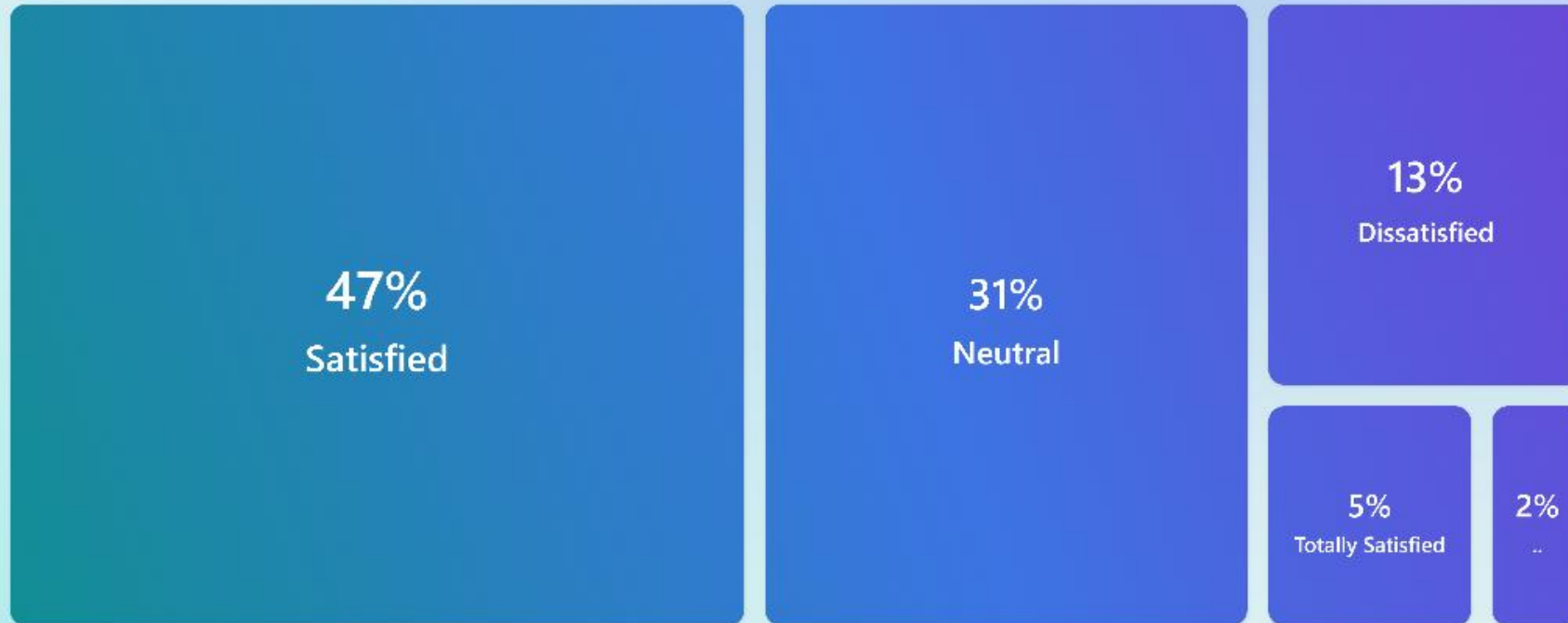


Treemap

Bar

< 3 of 6 >

## Marine and Coastal Ecosystems Using a scale of 1 \*Totally Dissatisfied) to 5 (Totally /very Satisfied)



Treemap

Bar



4 of 6





41 responses submitted

General Use Using a scale of 1 \*Totally Dissatisfied) to 5 (Totally /very Satisfied)



Treemap

Bar



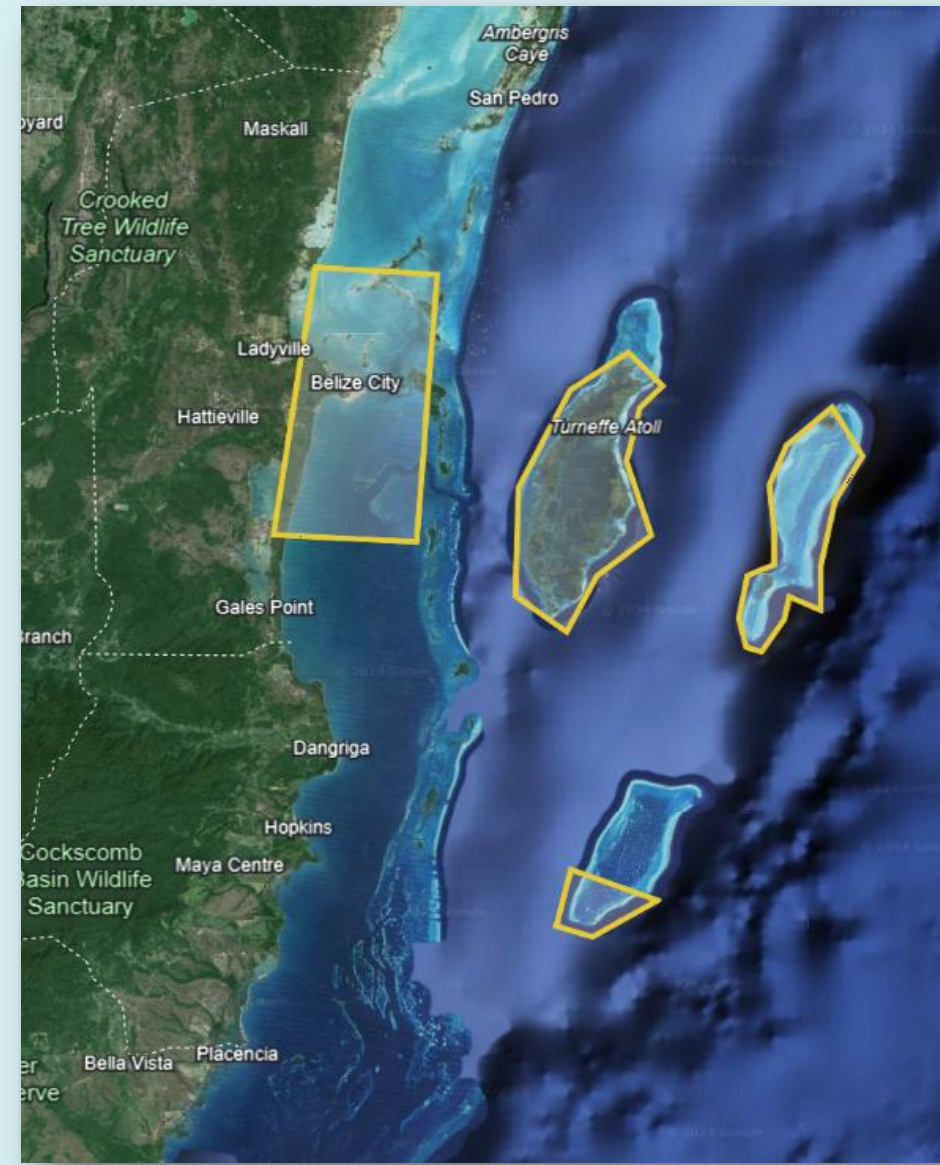
5 of 6



## 6. Comments/Feedback

12 Responses

ID ↑	Name	Responses
1	anonymous	None.
2	anonymous	On comment
3	anonymous	Share web maps with participants for further exploration and more granular level feedback.
4	anonymous	There may be gaps in tourism ocean use regarding sport fishing, especially in Turneffe. I'm not sure about what the coastal and marine ecosystem shows so can't score effectively.
5	anonymous	Good job. I would need to understand the sampling sizes and how they were calculated and captured in order to make further comments.
6	anonymous	Overall it was relatively clear
7	anonymous	I believe it would be best to vet and get feedback directly from the users that contributed to the OUS and compare with existing data from experts in the different sectors
8	anonymous	perhaps the survey itself can be shared so that following the map is much easier. the slide with the map can be formatted so that the map is much bigger. it's hard to provide feedback for a map that is hard to read.
9	anonymous	High valued areas for fisheries, general use and coastal and marine ecosystems are under represented
10	anonymous	Consider the formula used in the heat maps. If the percentage of respondents is high then the formula for the heat map is more reliable. Do an analysis of evaluators and if there is a correlation to area size. If there is a strong correlation, correct for it.
11	anonymous	Coastal ecosystems seem to be missing as well as navigational routes.
12	anonymous	For Marine and Ecosystem, Lighthouse Reef Atoll didn't have any representation. It will be great to get input from Belize Audubon Society







# Site visit and Remote



## BELIZE FISHERIES DEPARTMENT MINISTRY OF BLUE ECONOMY AND DISASTER RISK MANAGEMENT

PRINCESS MARGARET DRIVE, BELIZE CITY, BELIZE C.A.  
P.O. BOX 148 PHONE (+501) 224-4552  
Email: [fisheries\\_department@fisheries.gov.bz](mailto:fisheries_department@fisheries.gov.bz) Website: [www.fisheries.gov.bz](http://www.fisheries.gov.bz)



### Public Notice Commercial Fisherfolk License Renewal 2025

December 23, 2024.

The Belize Fisheries Department hereby informs the PUBLIC that it will commence the renewal of fisher folk licenses on **Monday, January 6, 2025**. A grace period for renewals will be in place until **Friday, January 31, 2025**.

Fishers are advised to bring along all pertinent documents upon renewal to facilitate the process.

Licensing renewals will be carried out for the following communities at the Belize Fisheries Department Office in Belize City on the dates specified below:

Date	Communities
6 <sup>th</sup> January – 10 <sup>th</sup> January	Belize City fishers and other fishers from Belize District, except San Pedro and Caye Caulker.
13 <sup>th</sup> January – 17 <sup>th</sup> January	All fishers from Corozal District (including Chunox, Copper Bank, Sarteneja etc.), and all fishers from Orange Walk District.
20 <sup>th</sup> January – 24 <sup>th</sup> January	All fishers from Stann Creek District (including Dangriga, Hopkins, Riversdale, Seine Bight, Placencia, Independence etc.).
27 <sup>th</sup> January – 31 <sup>st</sup> January	All fishers from San Pedro & Caye Caulker, and all fishers from Cayo District.

*The Mission of the Department is to provide the country and the people of Belize with the best possible management of aquatic and fisheries resources, with a view to optimize the present and future benefits through efficient and sustainable management.*

[www.portauthority.bz](http://www.portauthority.bz)



## Registration & LICENSING EXERCISE 2025

The Belize Port Authority informs owners of skiffs, jet ski, sailing vessels, launches, tugboats, barges, dredges or any other watercraft plying the inland and coastal waters of Belize that the Registration and Licensing exercise for the years 2025 will be commencing November 2024.

### LICENSING TEAMS SCHEDULE

JAN 6 - 8	Orange Walk Town and surrounding villages <b>LOCATION: Lamanai Landings</b>
JAN 9 - 10	Ladyville and surrounding areas <b>LOCATION: Vista Del Mar Marina</b>

For more information on the requirements for registering and licensing of vessels, contact the Belize Port Authority's Registration Department at Tel: 222-5665/5666 or Whatsapp 672-5666.





# OUS Results

Responses  
Updated:

2025-04-13  
02:11:08 UTC



857

Individual  
Responses



3202

Participants  
Represented



3044

Shapes  
Drawn

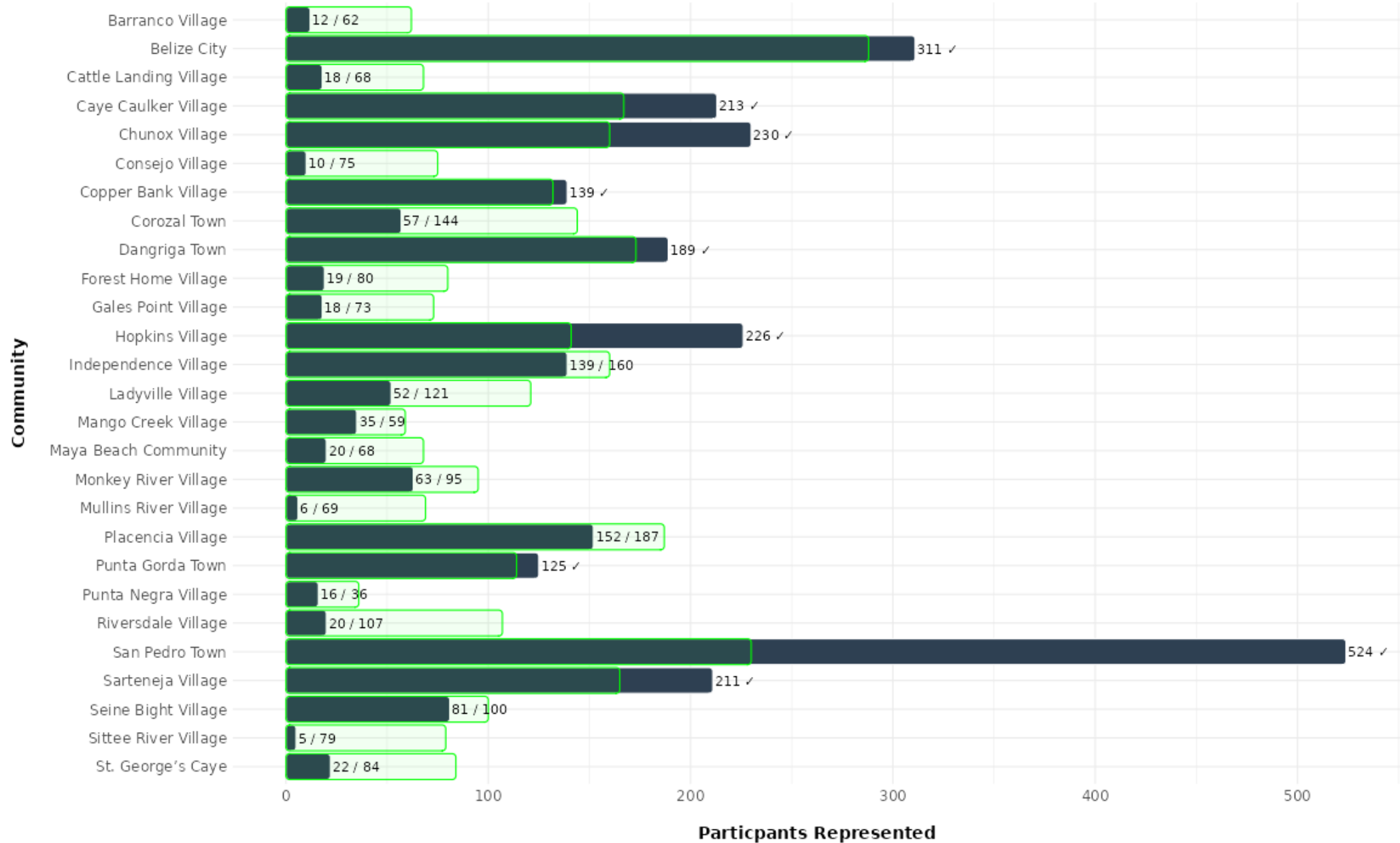


Sector Targets



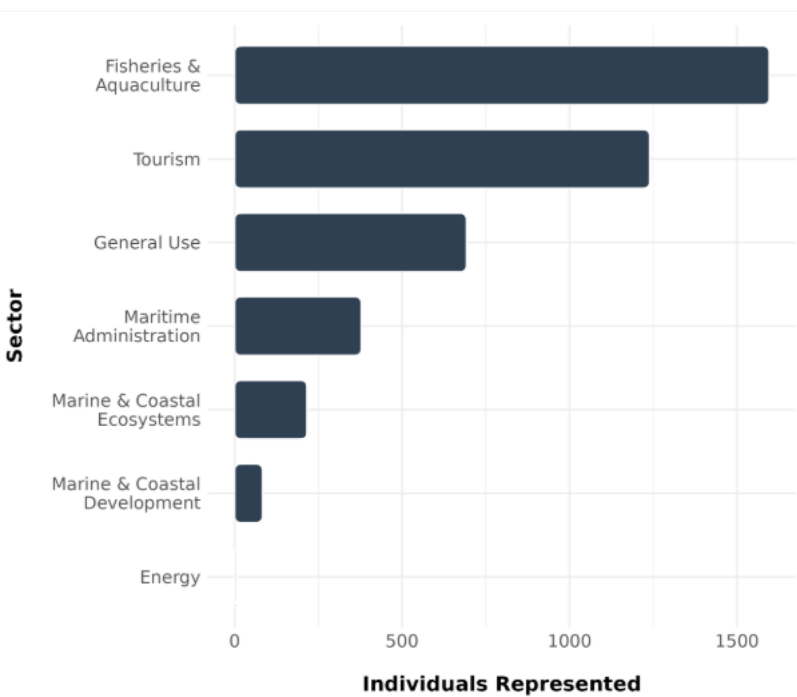
	Metric		Target		Participants		Percent achieved	
1	Energy		20		5		<div></div> 25%	
2	Fisheries & Aquaculture		795		1596		<div></div> 100%	
3	General Use		20		692		<div></div> 100%	
4	Marine & Coastal Development		50		83		<div></div> 100%	
5	Marine & Coastal Ecosystems		100		216		<div></div> 100%	
6	Maritime Administration		20		378		<div></div> 100%	
7	Tourism		100		1239		<div></div> 100%	

## Community Targets

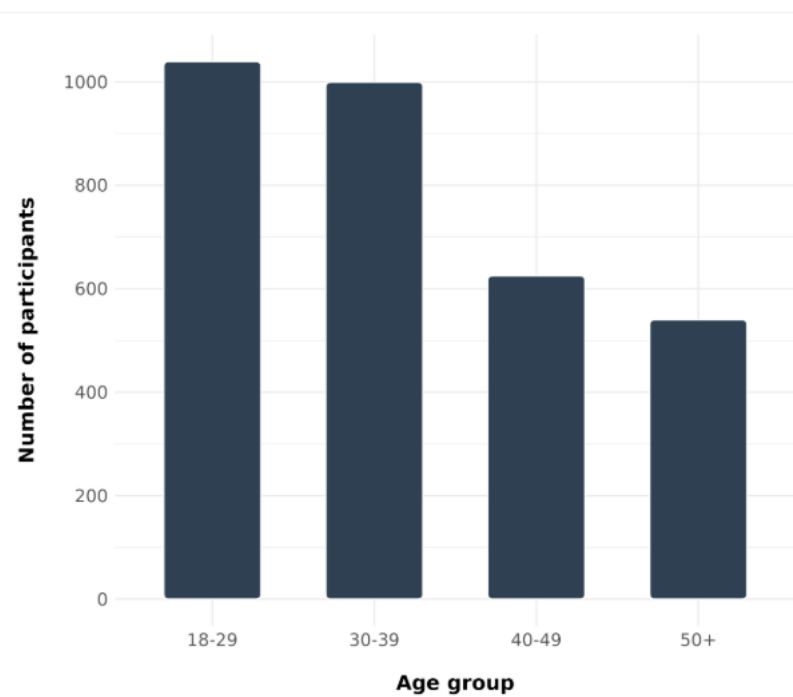




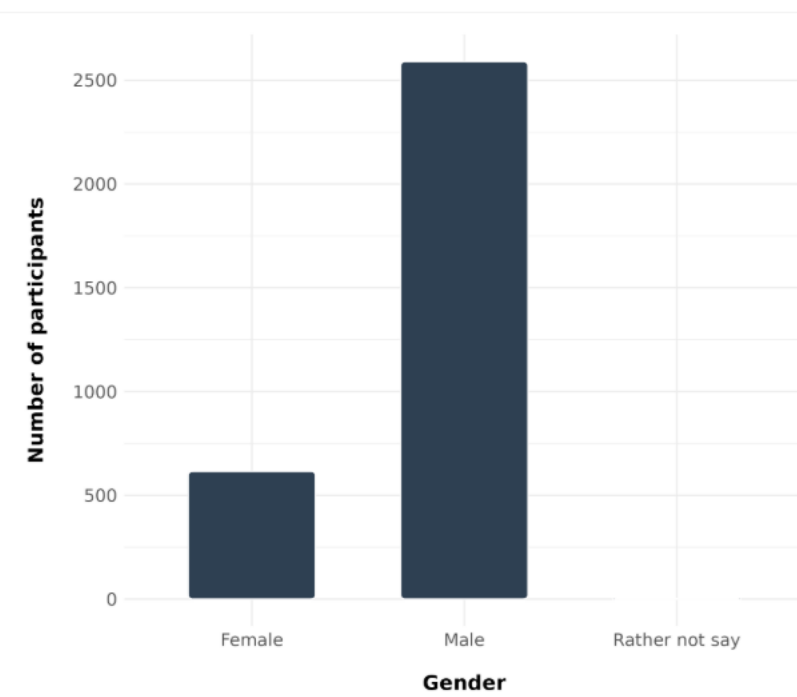
## Responses by Sector



## Demographics

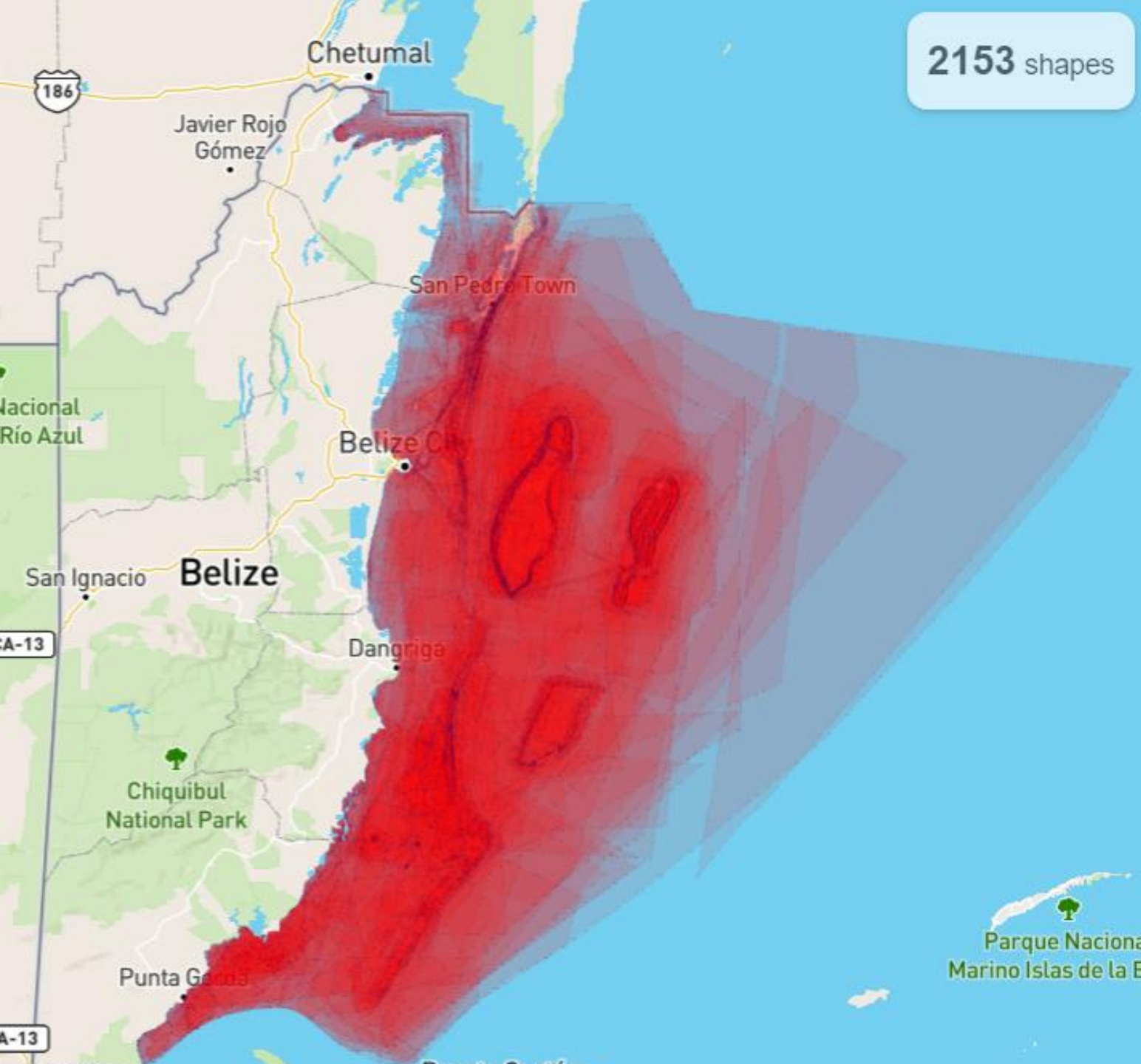


## Demographics



# Fisheries Breakdown

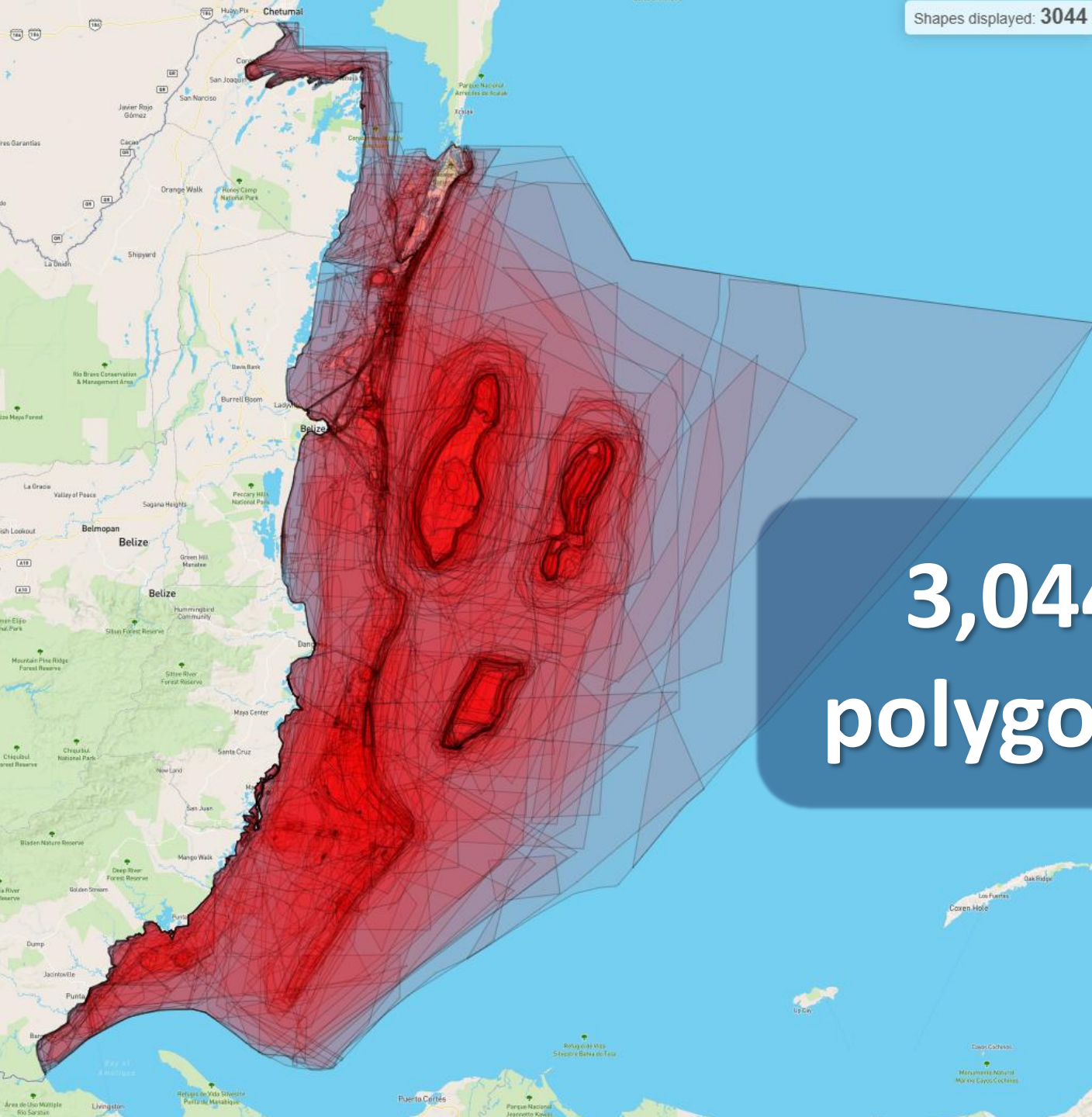
	Fisheries Type	Responses	Participants
1	Aquaculture/Mariculture	5	63
2	Aquarium Trade	2	5
3	Commercial Fishing	271	1191
4	Non-Commercial - Recreational Fishing	57	178
5	Non-Commercial - Subsistence	88	248
6	Non-Commercial - Unspecified	5	11
7	None Selected	24	110
8	Sports Fishing	65	289



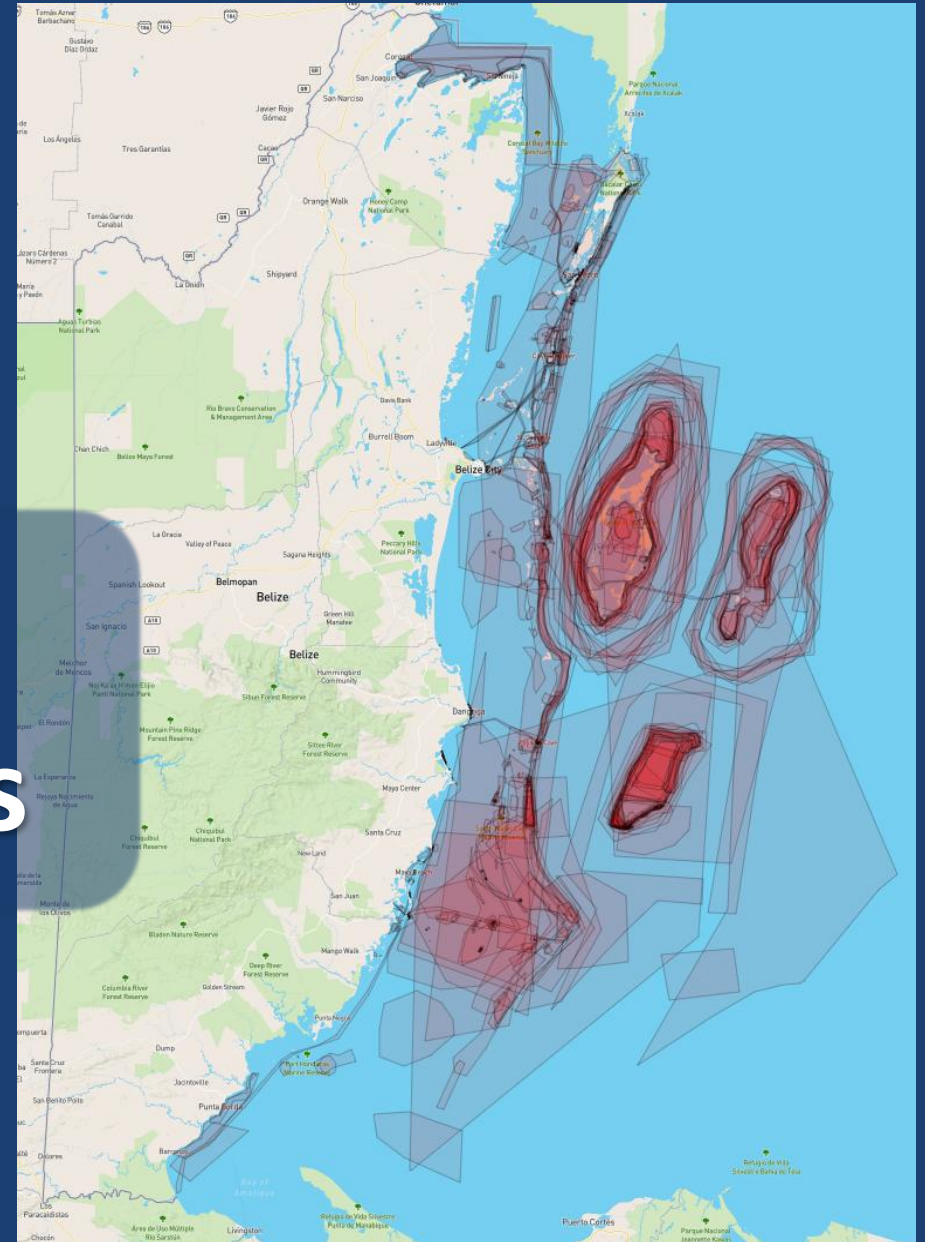
2,153  
polygons

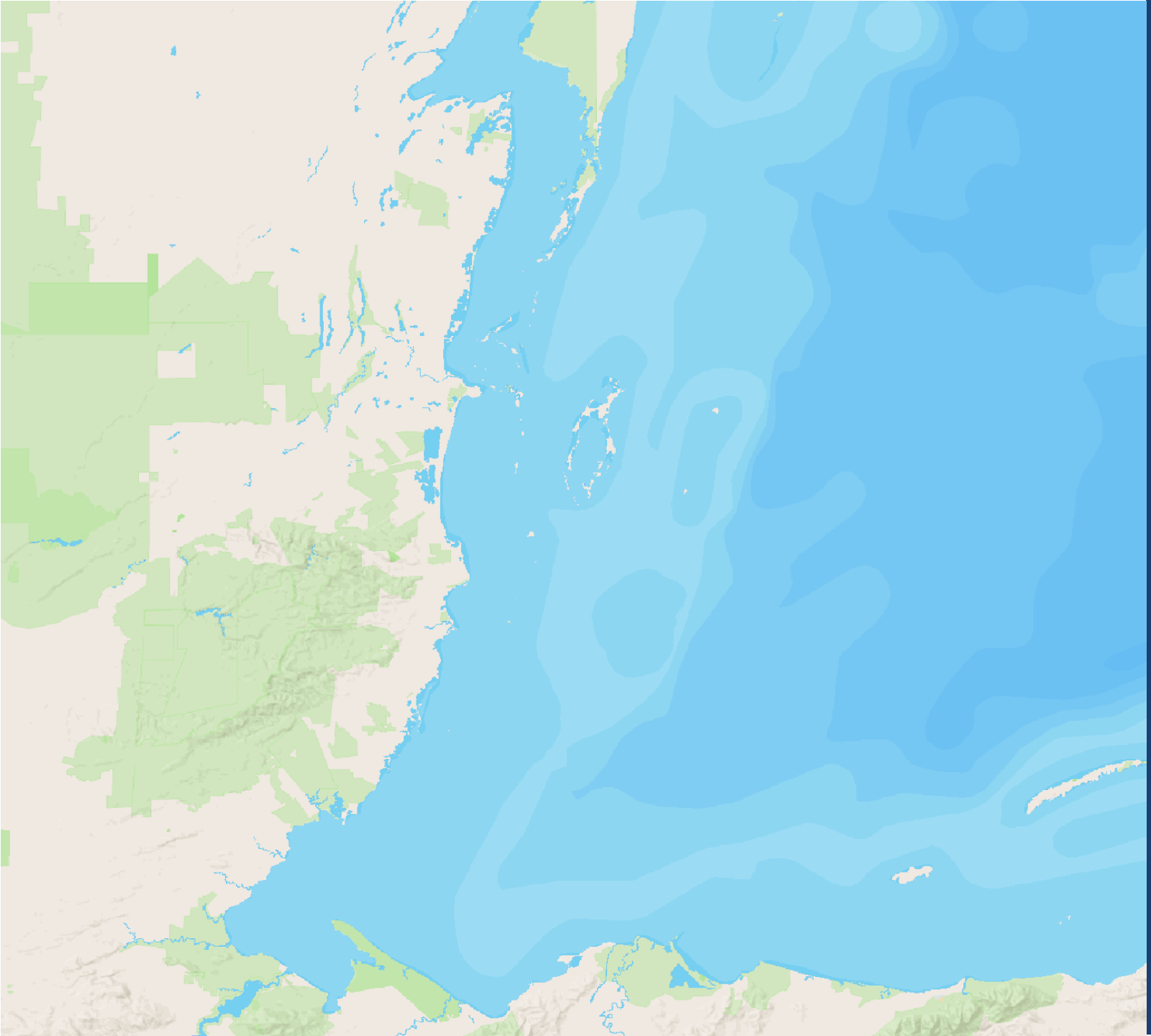


Shapes displayed: 3044



3,044  
polygons





# FISHERIES

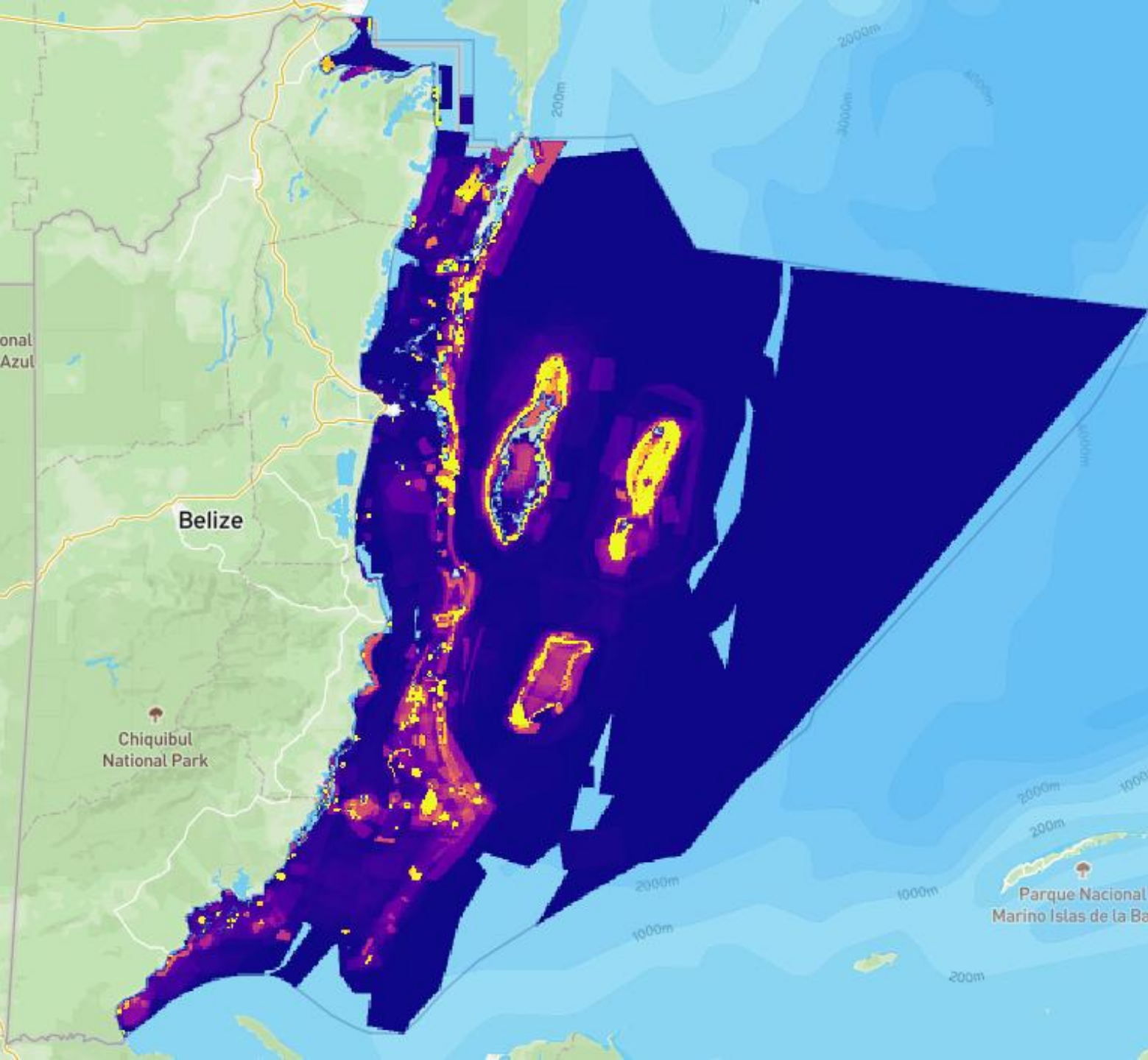
## SECTOR

How is ocean space  
used and valued?

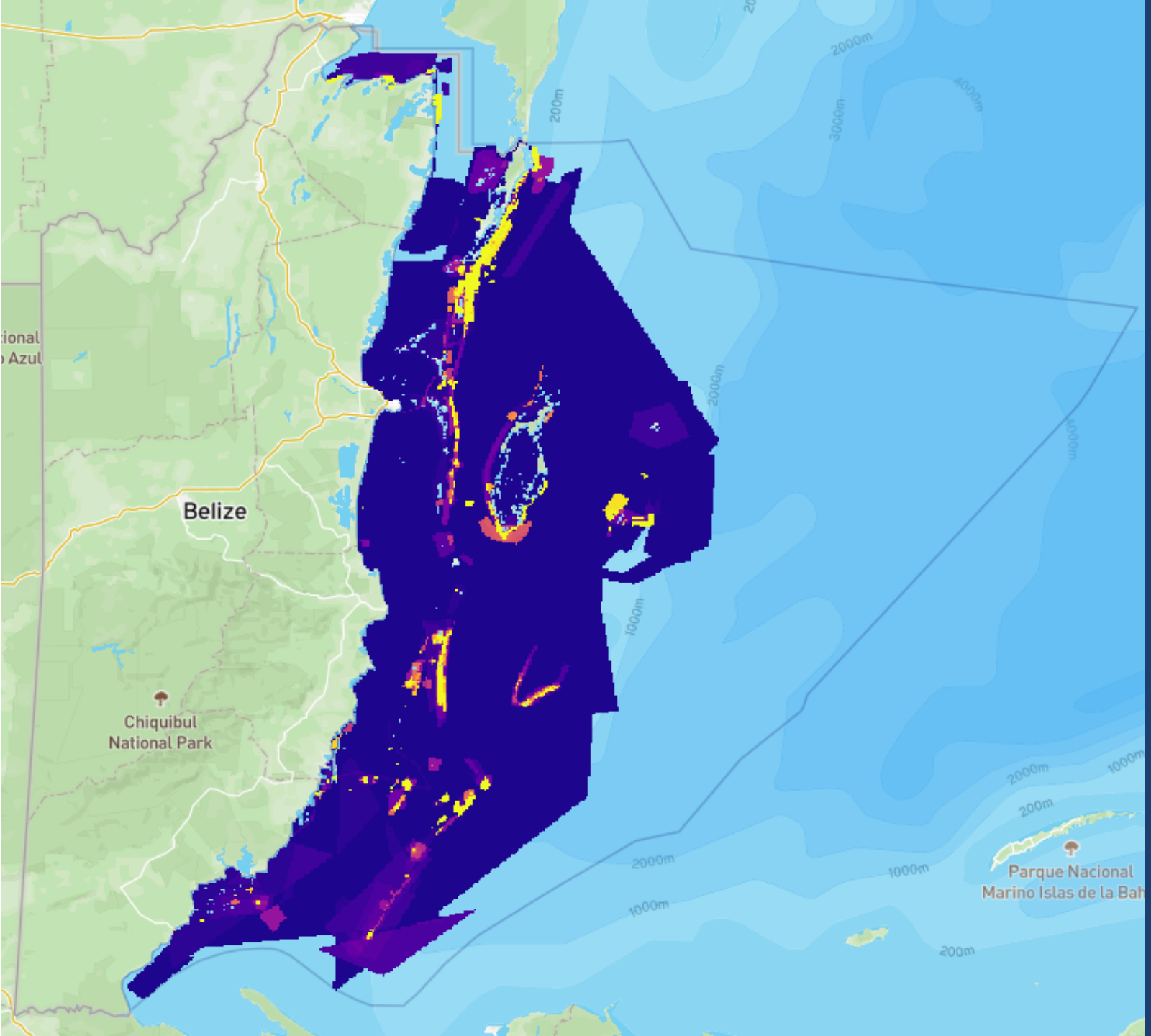


# FISHERIES SECTOR

How is the Fisheries  
Sector using the  
ocean space and  
valuing it?

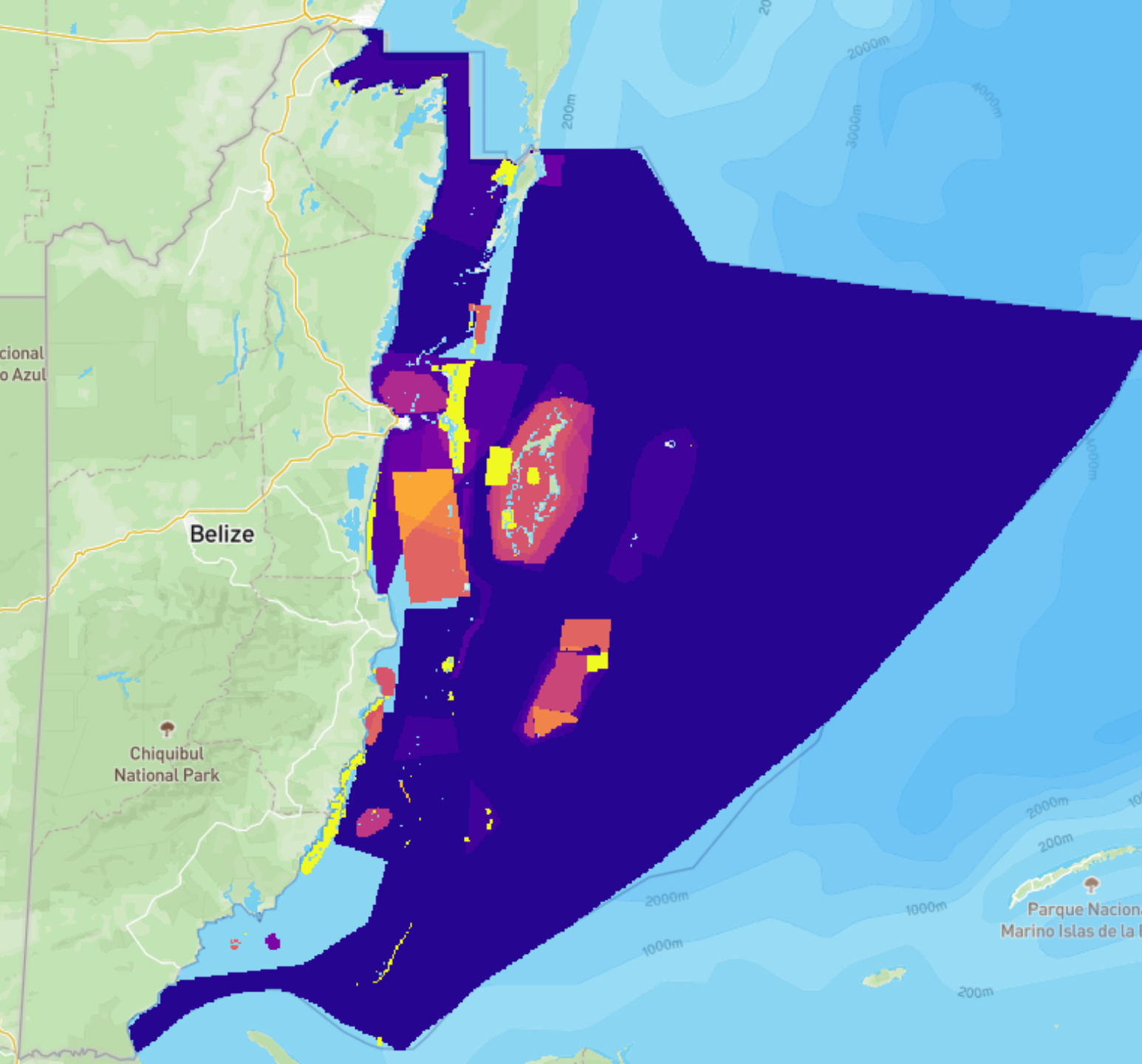






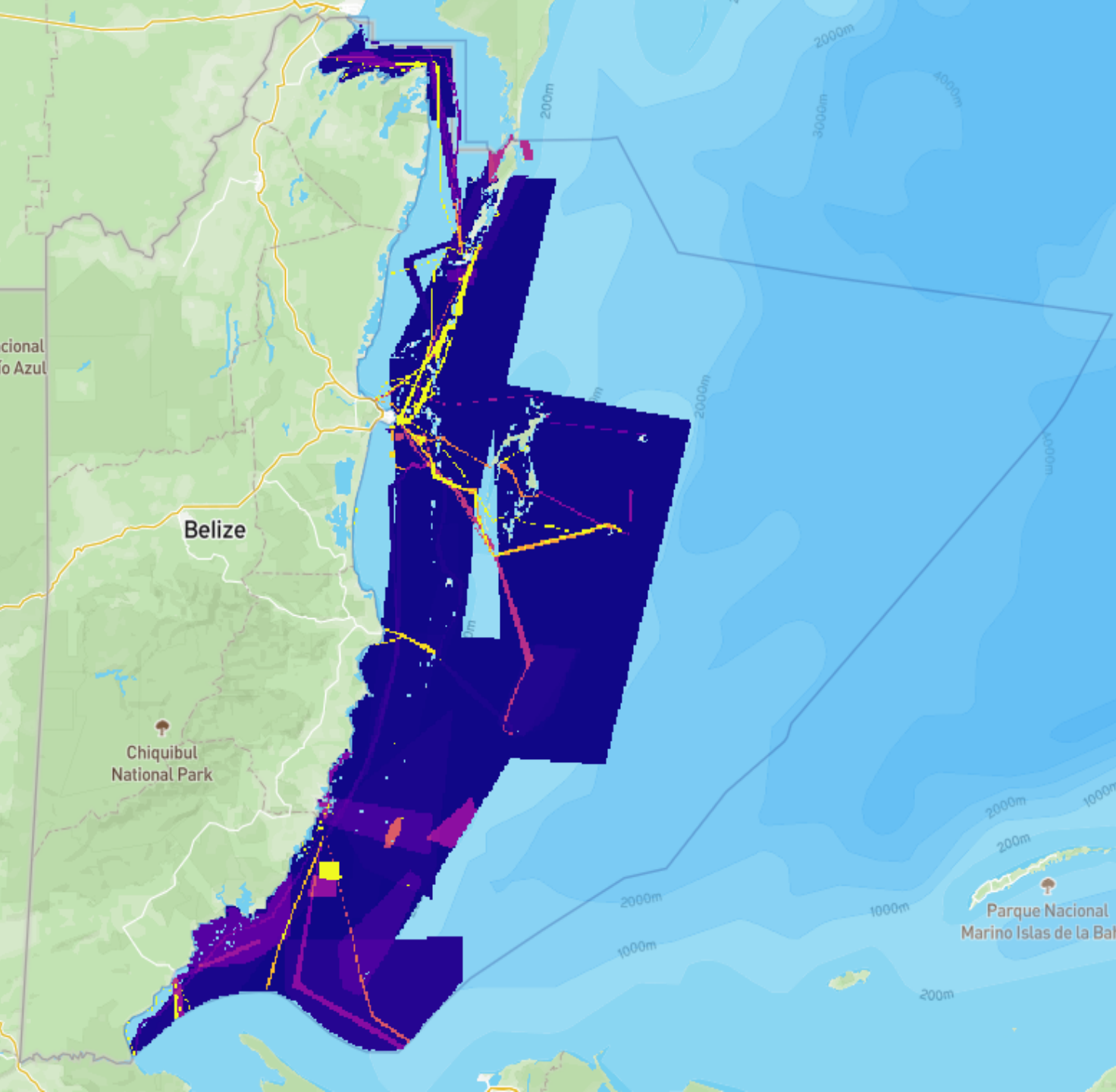
# TOURISM SECTOR

How is the  
Tourism Sector  
using the ocean  
space and valuing  
it?



# MARINE AND COASTAL ECOSYSTEMS

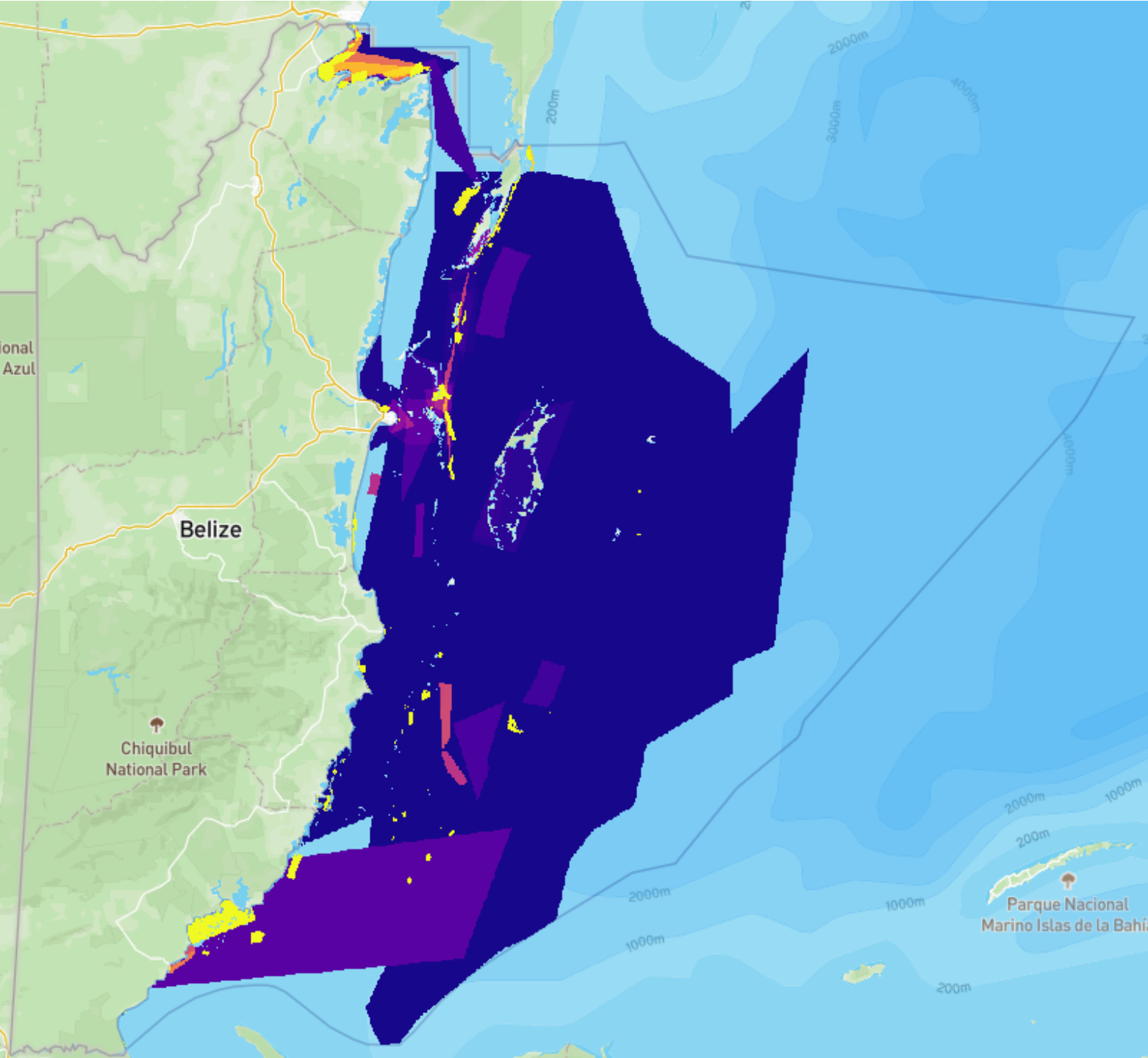
How is the Marine and  
Coastal Ecosystems  
sector using the  
ocean space and  
valuing it?



# MARITIME ADMINISTRATION

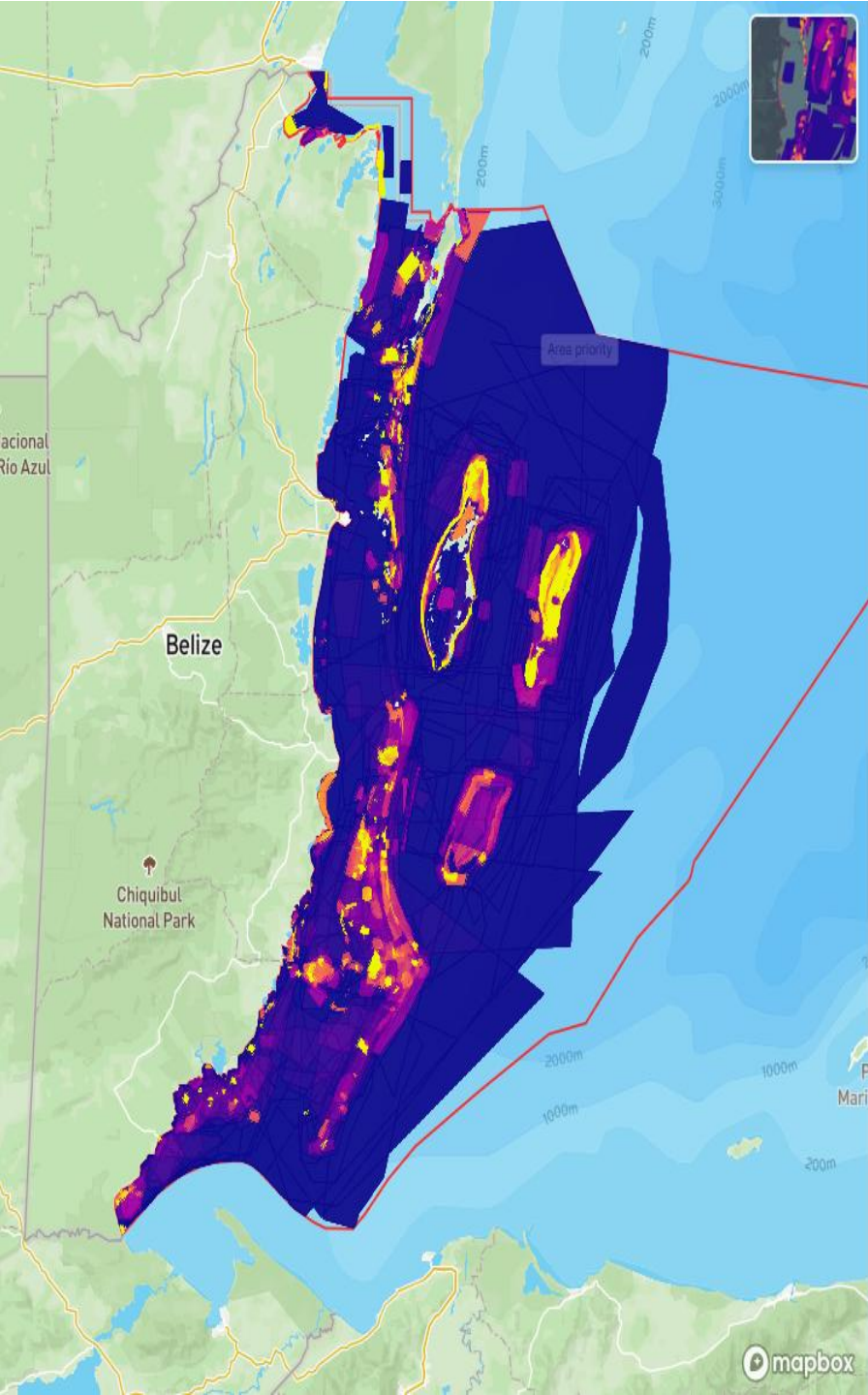
How is the Maritime  
Administration Sector  
using the ocean space  
and valuing it?





## GENERAL USE

How is the General Use Sector using the ocean space and valuing it?



## Fisheries and Aquaculture

Using a scale of 1 star (totally dissatisfied) to 5 stars (totally/very satisfied), please indicate your level of satisfaction with the heatmap as it depicts the use and value of ocean space to the aquaculture sector.

The fisheries sector includes all activities related to harvesting products from the sea, like commercial and subsistence fishing, including seaweed farming. This sector also involves recreational activities such as sports fishing, fly fishing, and deep-sea fishing.

### Interpreting heatmaps

Areas of value are represented by color ranging from **blue (low)**, to **red (medium)**, to **yellow (high)**. Hovering over a particular area of the heatmap will reveal the quantile that value falls into, with 0-5th being the lowest values, and 95-100th being the highest.












Skip Question




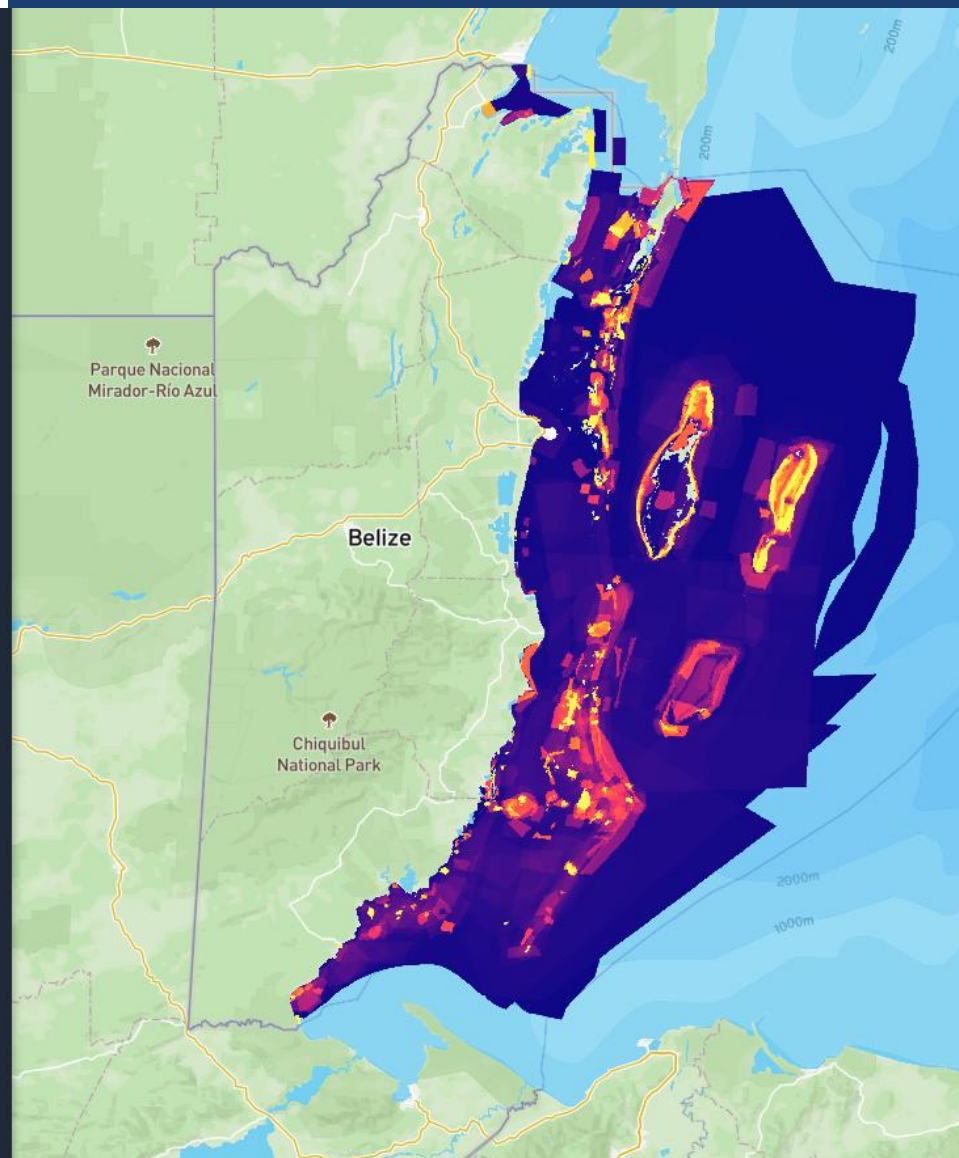
# FISHERIES SECTOR

## Heat Map Feedback

 Belize Sustainable Ocean Plan <

-  Maps
-  Overlay Layers
-  Sketching Tools
-  Discussion Forums
-  Cache Settings
-  Contact support
-  English
-  Sign In

Powered by  
 SeaSketch  
[Terms of Use](#) [Contact Us](#) Build 4c77a9b0



# SeaSketch

- Access Data Viewer
  - Overlay Layers
- Discussion Forum
  - Public Forum

[Seasketch.org/belize](https://seasketch.org/belize)





QUESTIONS



**OFF**

**Lunch 11:40**

We Return at 1:00



# Table Check-Ins

- Any Materials needed
- Temperature of the Groups
- Log in and Tool Check
- Any Concerns or Questions before we proceed







# DAY 1 – AFTERNOON SEGMENT

Time	Session	
12:30 pm	<b>Lunch</b>	
1:30 pm	<b>Training on the use of SeaSketch Planning Tool</b>	Small groups test the tool, create outputs
2:30 pm	<b>Coffee Break</b>	
3:15 pm	<b>Training on the use of SeaSketch Planning Tool (Continued)</b>	Group debrief and input for Day 2
4:30 pm	<b>Wrap up: Question &amp; Answer Reflection</b>	
5:00 pm	<b>Adjourn</b>	

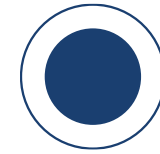
# Training on use of SeaSketch Planning Tool

April 14  
1:00-2:30



## Session Goal:

- Provide training on how to use SeaSketch Planning tool to draw sketches, run reports, and post to forums.



You're comfortable with how the tools work, can sign in, and know how to use the basic features of the tool—how to sketch and analyze a plan.

**Expected Outcome:**





Presenter:



**Will McClintock**

Director – McClintock Lab  
– SeaSketch



# Sketch, Analyze, Share Zones

**Objective:** Learn the basic functions of SeaSketch planning tool and their context

- Sign in and fill out your profile (10 min)
- Sketch, analyze and share a **biodiversity protection zone** (20 min)
  - Run a report on your biodiversity protection zone.
  - Post your biodiversity protection zone as an attachment to a message in the 2025 Training Workshop Forum.



# Sketch, Analyze, Share Zones

**Objective:** Learn the basic functions of SeaSketch planning tool and their context

- Review all forum posts as a group (15 min)
- In groups of 3 (45 min)
  - Discuss ideas for where to place a biodiversity protection zone
  - Sketch, analyze, edit a zone with a specific goal in mind.
  - Post your sketch with a justification into the Training Workshop Forum.





# Sketch Reflection

## Instructions:

- In your groups answer the following:
  - What did you learn about balancing use and protection?
  - What challenges or questions came up during the SeaSketch exercise?



**Coffee Break**  
3:00 – 3:15



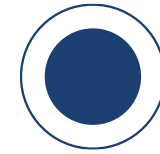
# SeaSketch Exercise

April 14, 2025  
3:15-4:30



## Session Goal:

- Compare and reflect on drafts.



Results posted to forum  
for us to review.

**Expected Outcome:**



Presenter:



**Will McClintock**

Director – McClintock Lab  
– SeaSketch



# Refine and Collaborate

**Objective:** Learn to collaboratively refine zoning concepts to meet planning goals and objectives.

- Review and discuss group posts (15 min)
- SeaSketch Facilitator copies a selection of sketches into a collection and demonstrates how to run a report on a network that borrows ideas from multiple sources. (15 min)





# Refine and Collaborate

**Objective:** Learn to collaboratively refine zoning concepts to meet planning goals and objectives.

- In groups of 3:
  - Participants run reports on a collection posted by the facilitator.
  - Participants modify the collection by editing zones or drawing new zones to improve protection goals and / or reduce impacts to human activities, posting results to the forum. (30 min)
- Group Review (15 min)



# Sea Sketch - Contd.

- **Participants: Compare sketches, analyze outcomes**
- Q – Did anyone try a different zoning strategy?
- What information did the report provide about your sketch?
- What were the most valuable insights from the report?
- How did your modifications change the report results?
- What trade-offs did you have to consider?





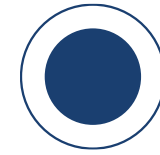
# Wrap up

April 14, 2025  
4:30-5:00



## Session Goal:

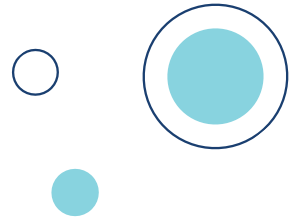
- Reflect on Day 1 activities, surface key insights, and identify any adjustments/adjustments for Day 2.



Shared takeaways and key insights.

**Expected Outcome:**

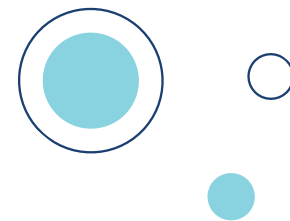




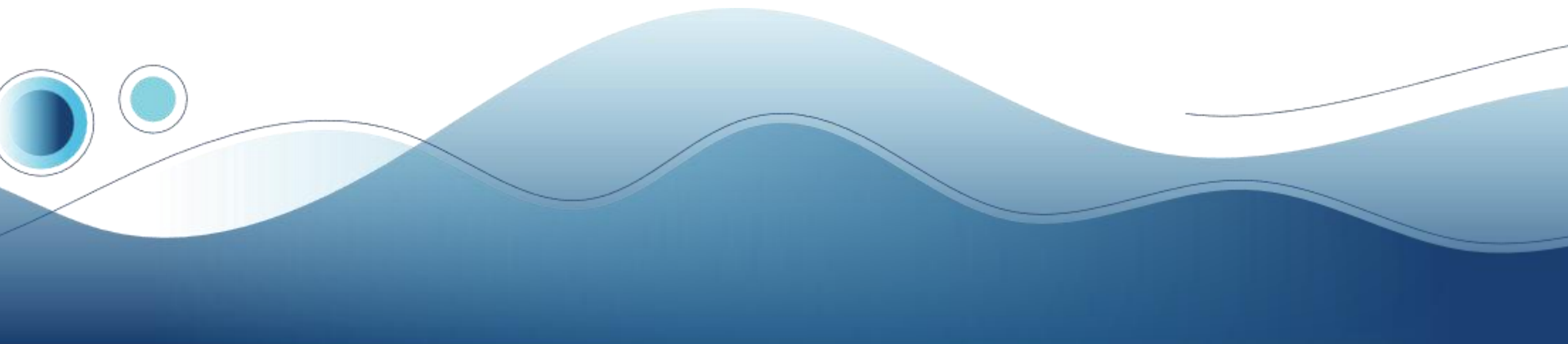
# REFLECTION CIRCLE

On the **index cards** at your table respond to:

- What stood out to you from today's session?
- What challenges or questions came up during the SeaSketch exercises?
- Should make any adjustments for tomorrow?
- What suggestions or clarifications would make tomorrow more effective?



# PARKING LOT







## Coastal Zone Management Authority and Institute

 Princess Margaret Drive, P.O. Box 1884,  
Belize City, Belize, Central America

 Tel: 501-223-5739/0719

 Fax: 501-223-5738

 [info@coastalzonebelize.org](mailto:info@coastalzonebelize.org)

 [www.coastalzonebelize.org](http://www.coastalzonebelize.org)

## Belize Sustainable Ocean Plan

 [bsop@coastalzonebelize.org](mailto:bsop@coastalzonebelize.org)

 [bsop.coastalzonebelize.org](http://bsop.coastalzonebelize.org)

# Thank you for participating

