

This workshop is brought to you by



in partnership with

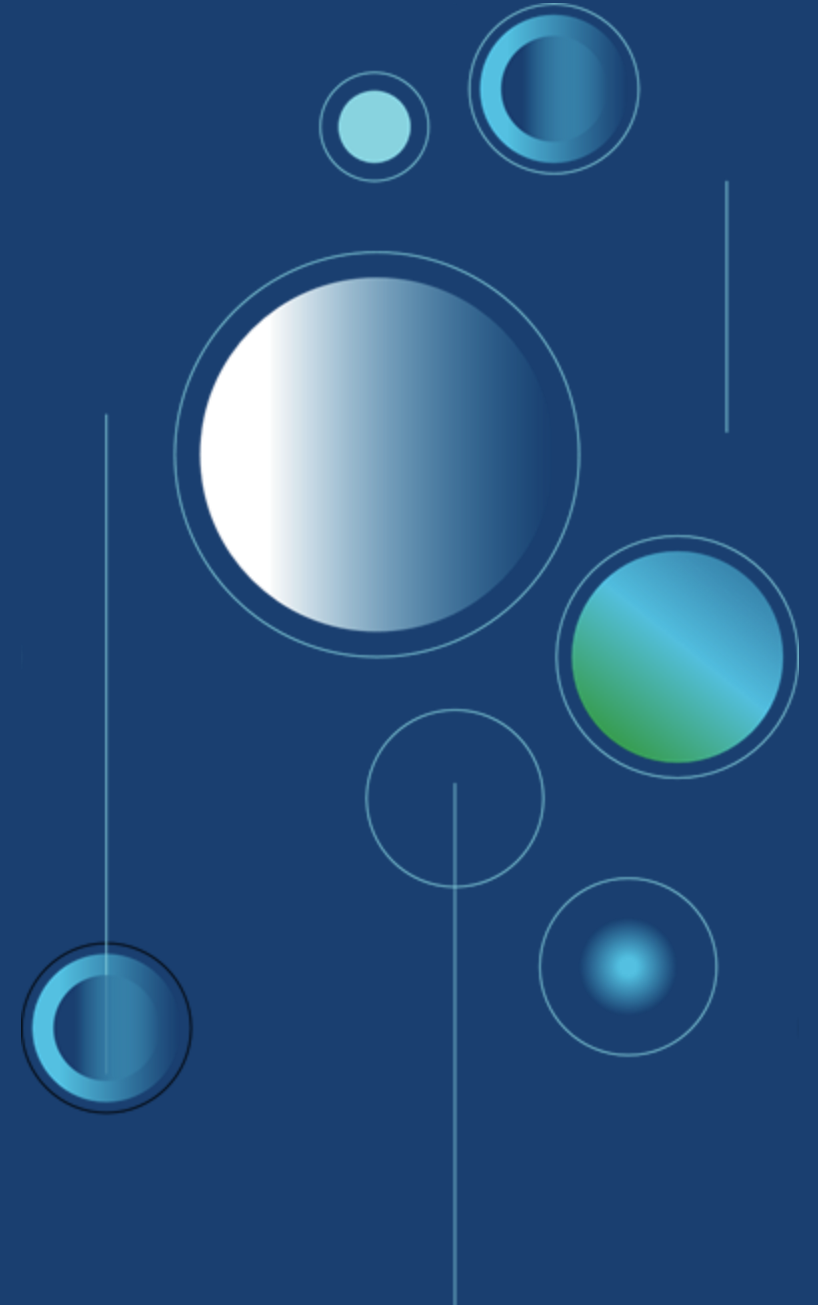


Welcome to



MSP Future Planning Workshop

Date: February 25th –27th, 2025
Location: Coral Room,
Grand Resort and Residences Belize



Presenter:



Chantalle
Samuels

Chief Executive Officer

Coastal Zone Management Authority & Institute

Welcome

Meet Muslar Saunders Consultancy TEAM



Latrell Solis
Documentation & Coordination Support



Esmay Muslar
Lead Consultant



Shaliny Saunders
Lead Consultant



Jennifer Sacalxot
Documentation & Coordination
Support

MSP Compass Rules – The 8 B's of Participation

The 8 B's of Participation

1. Be Present

Remain actively engaged and minimize phone use during workshop sessions.

2. Be Respectful

Recognize and value diverse sector perspectives and experiences.

3. Be Brief

Keep contributions concise to allow balanced participation.

4. Be Open

Remain receptive to new ideas, viewpoints, and collaborative solutions.

5. Be Balanced

Consider environmental, social, economic, and governance dimensions in discussions.

6. Be Constructive

Focus conversations on solutions and future-oriented outcomes.

7. Be Collaborative

Work across sectors to build shared understanding and consensus.

8. Be Mindful of Boundaries

Maintain open body language, attentive listening, and professional engagement.

AGENDA: Day 1

- • Welcome & Opening Remarks
- • • Facilitator's Intro, Ice Breaker & Workshop Overview
- • • • Where Are We Now
- • • • • Break & Group Photo
- • • • • • Compatibility Matrix (Presentation & Activity)
- • • • • • • Lunch

AGENDA: Day 1 cont'd

- • Prioritization Activity: Part 1 and Part 2
- • • Break
- • • • Prioritization Part 3 – Report out
- • • • • Final Data Validation
- • • • • • Wrap Up
- • • • • • • Adjourn



Stakeholder Compass

- "When making tough spatial decisions, which of these most strongly influences your perspective?"

Meet THE MSP TEAM



Samir Rosado
MSP Process Lead



Janel McNab
MSP Coordinator



Delwin Guevarra
GIS Mapping & Data Analyst



Kelsie Garbutt
MSP Communications & Public Relations
Officer



Janiel Chan
MSP GIS Technician



Serena Reyes
MSP Project Assistant



Where ARE WE NOW?



Belize Sustainable Ocean Plan



Janel McNab

MSP Future Planning Workshop
Grand Residences & Resort Belize
25th Feb 2026

What is MSP?

Marine Spatial Planning is a public process of allocating and analyzing the **spatial** and **temporal** distribution of human activities in marine areas to achieve **ecological**, **economic** and **social** objectives that are usually specified through a political process.

-UNESCO

- Science-based and participatory
- Integrates multiple sectors and users
- Forward-looking and adaptive
- Ecosystem-based approach



What does MSP Do?

- **Organize** use of space
- **Balance** competing ocean uses
- **Reduce** conflicts
- **Protect** marine ecosystems & biodiversity
- **Support** sustainable economic development

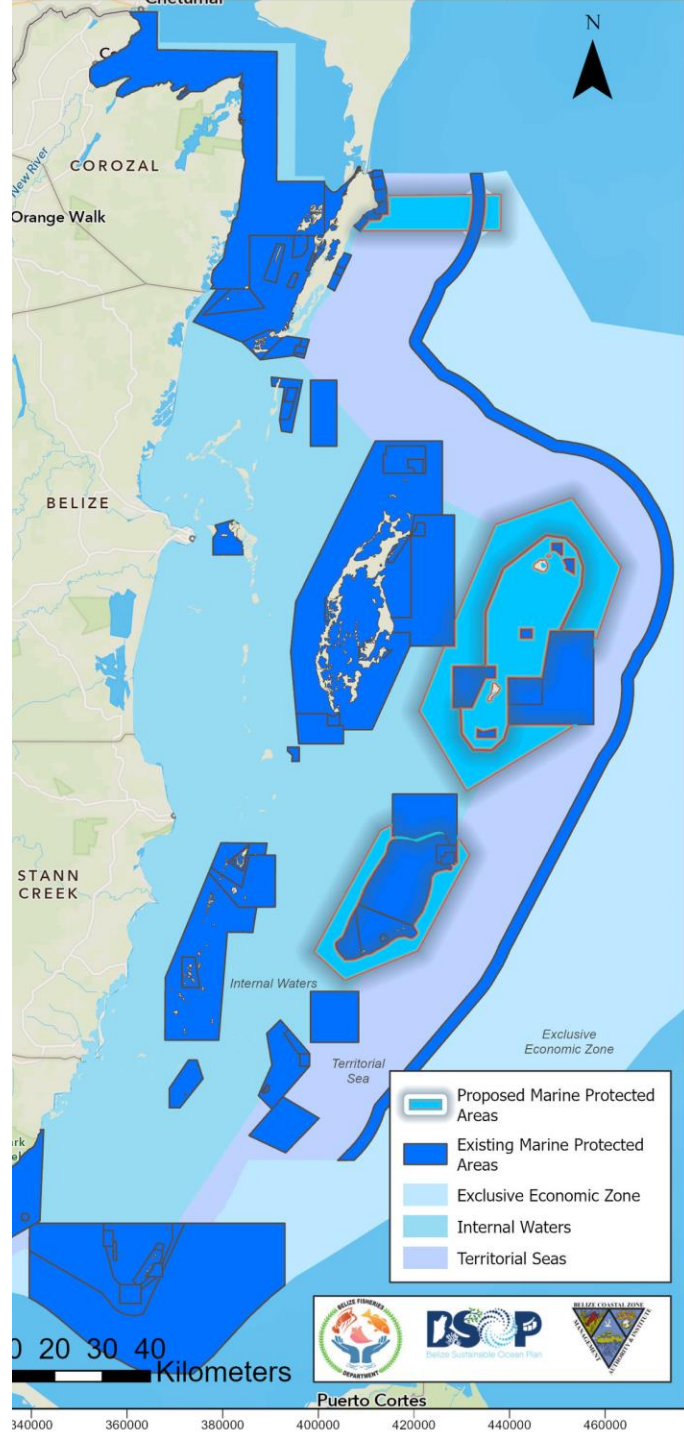
What can MSP Do?

- **Identify** conservation areas, sustainable use, and development
- **Guide** decision-making & permitting
- **Improve** ocean governance & transparency
- **Support** climate resilience and adaptation
- **Help** countries meet international commitments (e.g. 30x30)



Why MSP Matters to Belize

- **Supports** healthy coral reefs, mangroves, and seagrass that protect our coastline
- **Sustains** key sectors such as fisheries, tourism, and maritime transport
- **Reduces** conflicts among marine users
- **Strengthens** climate resilience and food security
- **Ensures** long-term benefits for present and future generations



OBJECTIVES:

1. Legally enforceable plan that allocates space in support of all activities that take place within Belize's Ocean.
2. Facilitate the expansion of biodiversity protection zones

Blue Bond Targets:

High Biodiversity Protection Zone
11.6% of 15%

Medium Biodiversity Protection Zone
13.5% of 15%

Total Protected
25.05% of 30%

The MSP Process

Complete

Establishing Authority



Complete

Organizing the MSP Process



**Achievement of
Milestone 3**
Oct. 19th, 2023



Complete

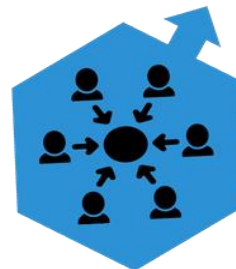
Obtaining Financial Support



**Phase 1: Ocean Use
Survey**
Jan – April 2024



Engaging Stakeholders



Complete

**Multi-Stakeholder MSP Workshop
1: Assessment for Planning**
May 8-11, 2024



**Achievement of
Milestone 4**
Nov. 4, 2024



The MSP Process

Analyzing Existing Conditions



Complete

Phase 2: Ocean Use Survey
Jan – Mar 2025



BSOP GeoSpatial Workshop – Utilizing SeaSketch & Marxan
April 14-16, 2025

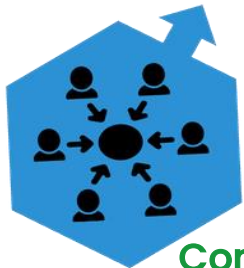
National Coral Reef Monitoring Network Extraordinary Workshop
May 14, 2025



BSOP Spatial Planning Workshop (3ed Marxan)
Sept. 25-26, 2025



Engaging Stakeholders



Complete

The MSP Process

Analyzing Existing Conditions



Complete

MSP Future Planning Workshop
Feb 25-27, 2026

we are here

**Achievement:
Milestone 5**

Nov. 4, 2025



**MPA Design Criteria & National
Zoning Framework Workshop**

Dec 11, 2025

Analyzing Future Conditions



The MSP Process

future activities

Developing the Plan



Community Engagement

March –April 2026

Developing the MSP Plan

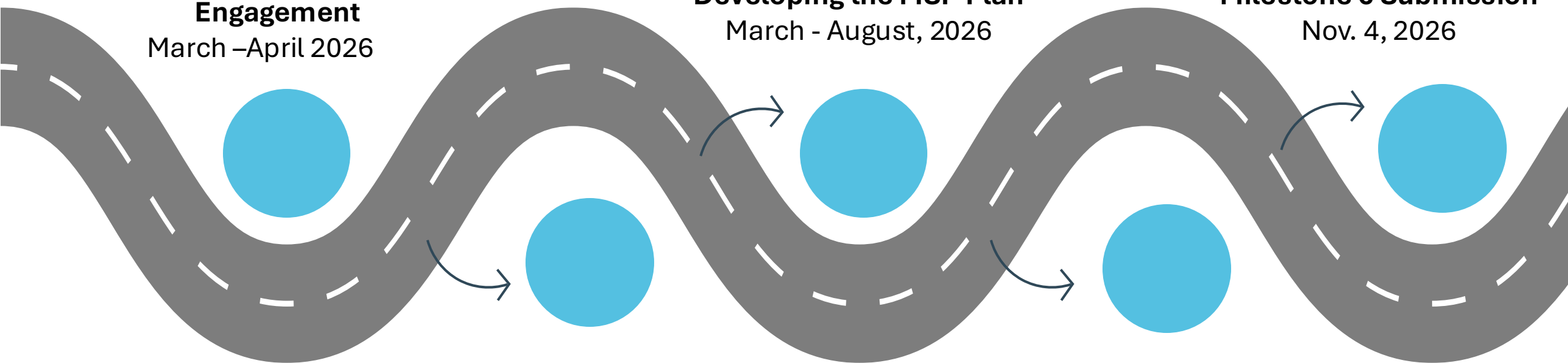
March - August, 2026

Milestone 6 Submission

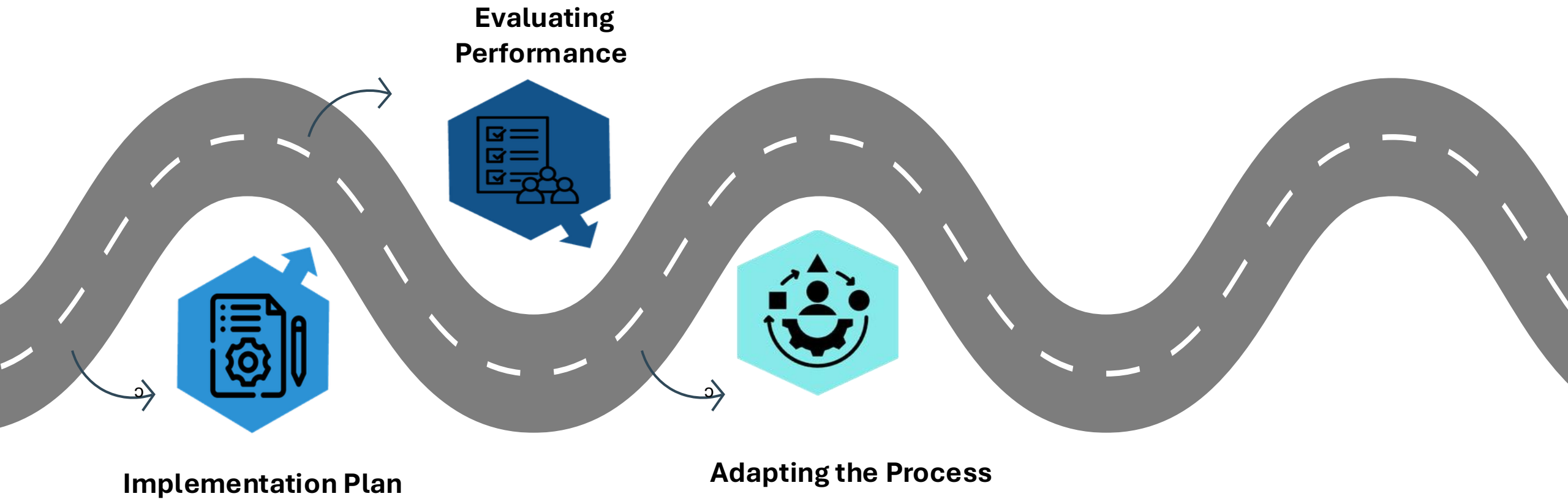
Nov. 4, 2026

**Consultancies:
Integrated Climate Risk
Assessment,
Cumulative Effects Assessment**
March – August 2026

**Public Inspection Period of
draft plan**
May - July 2026



The MSP Process



Break

15 minutes

Multi-Stakeholder MSP Workshop: Assessments for Planning

May 8 – 10, 2024



CONFLICT/COMPATIBILITY CRITERIA

Score/Color code	Conflict/compatibility level	Description
1	Compatible	Where there is a high degree of compatibility among the two activities being considered
2	Moderately Compatible/low Conflict	Considerately compatible due to management systems, regulations seasonality, time, etc.
3	Moderately Conflict/low Compatible	Activities are allowed/must occur in the same space, but management and regulations do not mitigate against conflict
4	Conflict	Where there is a high degree of conflict between the activities being considered

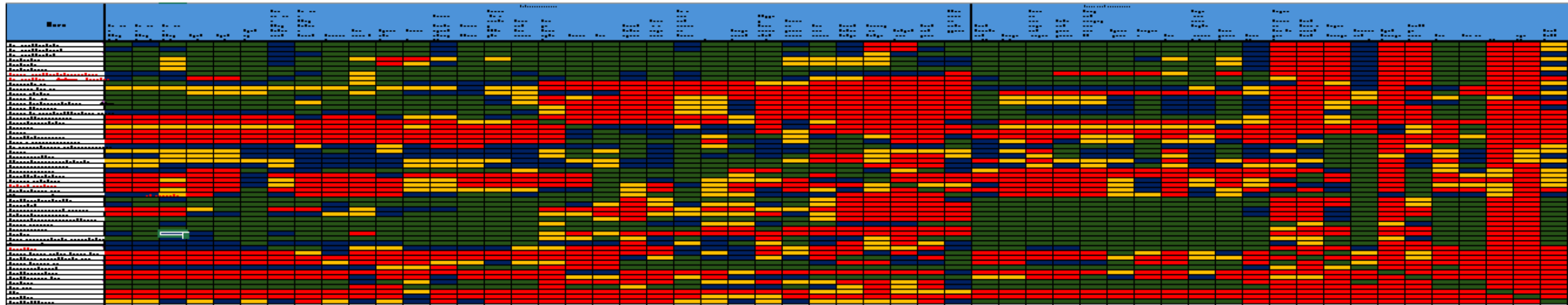
ACTIVITY INSTRUCTIONS

- 01 Compare uses/features**
 Using the matrix table, complete pairwise comparison of uses and features. Scores are given according to the conflict/compatibility criteria table provided.
- 02 Identify areas of conflict**
 Using the worksheet maps, identify areas of conflicts. Using the writing aids, list uses or features that are competing for the space identified. Use the comments box to provide further details (i.e. key stakeholders, reasons for conflict etc).
- 03 Identify areas of compatibility**
 Using the worksheet maps, identify areas of compatibility. Using the writing aids, list uses or features that are compatible for the space identified. Use the comments box to provide further details (i.e. key stakeholders, reasons for conflict etc).

Multi-Stakeholder MSP Workshop: Assessments for Planning

May 8 – 10, 2024

Results:



Multi-Stakeholder MSP Workshop: Assessments for Planning

May 8 – 10, 2024

Updates:

- Compatibility Matrix was filled out
- Validation was an issue due to the amount of uses
- Scoring system Revision

Multi-Stakeholder MSP Workshop: Assessments for Planning

May 8 – 10, 2024

CONFLICT/COMPATIBILITY CRITERIA

Score/Color code	Conflict/compatibility level	Description
1	Compatible	Where there is a high degree of compatibility among the two activities being considered
2	Moderately Compatible/low Conflict	Considerately compatible due to management systems, regulations seasonality, time, etc.
3	Moderately Conflict/low Compatible	Activities are allowed/must occur in the same space, but management and regulations do not mitigate against conflict
4	Conflict	Where there is a high degree of conflict between the activities being considered

Combined into one score “Moderately Compatible”

Multi-Stakeholder MSP Workshop: Assessments for Planning

May 8 – 10, 2024

Updates:

- Compatibility matrix was filled out
- Validation was an issue due to the amount of uses
- Scoring system revision
- Updated Matrix Needs to be finalized
- Need for Emerging/Expanded uses to be incorporated

Activity 1: Finalize Compatibility Matrix

In your groups, review the completed compatibility matrix for your sector.

1. Consider the **spatial** overlap of the human uses with other human uses and human uses with environmental features and determine whether the assigned scores are accurate.
2. Where the scores are inaccurate, place a **sticky dot** on the matrix and number chronologically if multiple dots are placed.
3. On the notepad, write the **number of the dot** and a very **short rationale** explaining why the score assigned is/are inaccurate and what the **recommended score** should be.
4. Once completed, report back any discrepancies identified and short rationale.

Activity 1: Finalize Compatibility Matrix

Score:



No Spatial Overlap: Activities do not occur within the same space at any given time.



Compatible: Activities can coexist and interact within a shared space without any conflict, interference, or degradation of function. Overlaps will not affect safety, usability, performance, and may even be mutually beneficial.

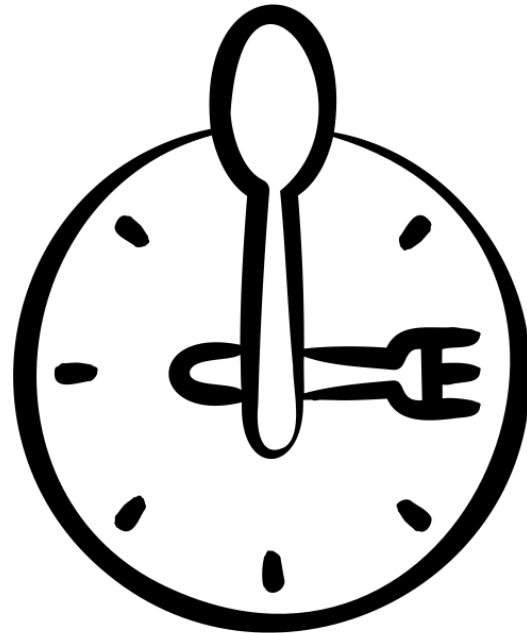


Moderately Compatible: Activities can coexist and interact with a reasonable degree of harmony, but with notable constraints, trade-offs, or potential for occasional conflicts. The interaction is acceptable under normal conditions but may require monitoring and management.



Incompatible: Activities cannot coexist or function together within the same space. Interaction between activities would lead to conflicts, interference, and degradation. There are no acceptable overlaps that exists without substantial modification or intervention.

Lunch
time



Activity 2: Prioritization of Human Uses

Part 1: Identification of Key Considerations for Spatial Overlap Analysis

Spatial Overlap for Marine Spatial Planning:

- Essential for balancing objectives
- Determine Key Considerations
- Context

Activity:

1. Using a Menti word cloud identify what you believe is a key consideration when trying to spatially prioritize one use over another.
2. Using Menti, prioritize the top five considerations by importance.

Activity 2: Prioritization of Human Uses



Word Cloud Activity
(5 mins max)

Activity 2: Prioritization of Human Uses

Part 2: Prioritization of Human Uses

- With key considerations in mind, in your groups prioritize human uses within your sector by perceived importance (High to Low).
- Report back



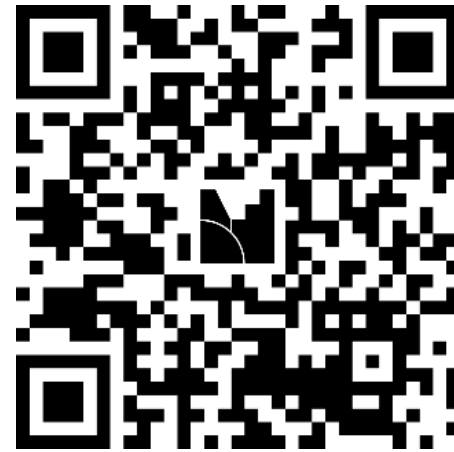
Fisheries



Tourism



Maritime



M&C Development



M&C Ecosystems

Break

15 minutes

Activity 2: Prioritization of Human Uses

Part 3: Reporting of Findings

End of Day 1